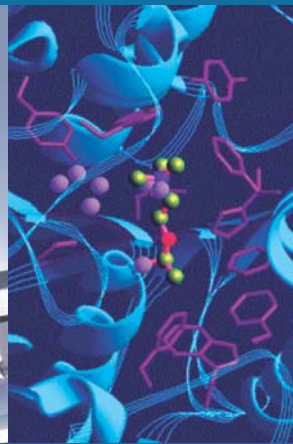
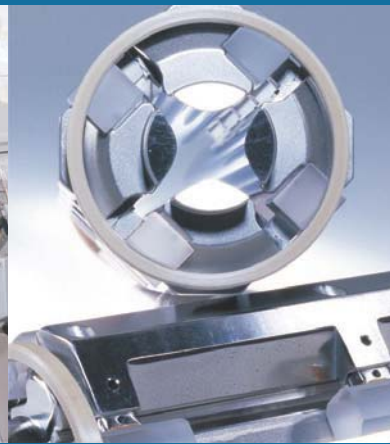


Thermo Fisher Scientific

Installing Isodat under Microsoft™ Windows™ 7 Installation Manual

Revision B - 1288480



Legal Notices

© 2013 Thermo Fisher Scientific Inc. All rights reserved.

Original Operating Instructions

Foundation, Xcalibur, Surveyor, and Accela are registered trademarks of Thermo Fisher Scientific Inc. in the United States.

Microsoft and Windows are registered trademarks of Microsoft Corporation in the United States and other countries. Adobe is a registered trademark of Adobe Systems Incorporated in the United States and other countries.

All other trademarks are the property of Thermo Fisher Scientific Inc. and its subsidiaries.

Thermo Fisher Scientific Inc. provides this document to its customers with a product purchase to use in the product operation. This document is copyright protected and any reproduction of the whole or any part of this document is strictly prohibited, except with the written authorization of Thermo Fisher Scientific Inc.

Release History: Revision A released in February 2012.
Revision B released in April 2013.

Contacting Us

There are several ways to contact Thermo Fisher Scientific.

Assistance

For technical support and ordering information, please visit:

www.thermoscientific.com/ms

Service contact details are available under:

www.unitylabservice.com

For brochures, application notes and other material, please visit:

www.thermoscientific.com

For operating manuals, please contact your local Service organization.

Suggestions to the Manual

❖ To suggest changes to this manual

- Send your comments to:

Editors, Technical Documentation
Thermo Fisher Scientific (Bremen) GmbH
Hanna-Kunath-Str. 11

28199 Bremen

Germany

- Send an e-mail message to the Technical Editor at

documentation.bremen@thermofisher.com

You are encouraged to report errors or omissions in the text or index.
Thank you.

Contacting Us

Suggestions to the Manual

Contents

Chapter 1	Using this Manual	1-1
	About This Manual.....	1-1
	Typographical Conventions	1-2
	Signal Word.....	1-2
	Data Input	1-2
	Topic Headings.....	1-3
Chapter 2	Preparation	2-1
	Creating a Backup.....	2-2
	Turning User Account Control (UAC) Off.....	2-4
	Assigning Administrator Rights for Installation of Fiberline Driver.....	2-7
Chapter 3	Installation of Isodat	3-1
	Installing Basic Isodat.....	3-2
	Installing Isodat Service Pack	3-11
	Installing Foundation 2.2.....	3-11
	Installing GC Devices	3-26
	Assigning Administrator Rights to all Applications of Isodat	3-39

Chapter 1 Using this Manual

This chapter provides information about this manual. It contains the following topics:

- “About This Manual” on page 1-1
- “Typographical Conventions” on page 1-2

About This Manual

This *Installing Isodat under Microsoft Windows 7* describes the installation of Isodat 3.0 on the controlling computer of your Thermo Scientific™ gas isotope ratio mass spectrometer with the Windows™ 7 operating system.

Typographical Conventions

This section describes typographical conventions that have been established for Thermo Fisher Scientific manuals.

Signal Word

Make sure you follow the precautionary statements presented in this manual. The special notices appear different from the main flow of text:

NOTICE Points out possible material damage and other important information in connection with the instrument. ▲

Data Input

Throughout this manual, the following conventions indicate data input and output via the computer:

- Messages displayed on the screen are represented by capitalizing the initial letter of each word and by italicizing each word.
- Input that you enter by keyboard is identified by quotation marks: single quotes for single characters, double quotes for strings.
- For brevity, expressions such as “choose **File > Directories**” are used rather than “pull down the File menu and choose Directories.”
- Any command enclosed in angle brackets < > represents a single keystroke. For example, “press <F1>” means press the key labeled *F1*.
- Any command that requires pressing two or more keys simultaneously is shown with a plus sign connecting the keys. For example, “press <Shift> + <F1>” means press and hold the <Shift> key and then press the <F1> key.
- Any button that you click on the screen is represented in bold face letters. For example, “click **Close**”.

Topic Headings

The following headings are used to show the organization of topics within a chapter:

Chapter 1 Chapter Name

Second Level Topics

Third Level Topics

Fourth Level Topics

Chapter 2 Preparation

Before you start the installation of Isodat 3.0, several preparations should be performed on your computer:

- “Creating a Backup” on page 2
- “Turning User Account Control (UAC) Off” on page 4
- “Assigning Administrator Rights for Installation of Fiberline Driver” on page 7

Creating a Backup

The installation procedure overwrites the previous version of Isodat. Thermo Fisher Scientific provides a shortcut to the VersionHandler in the Isodat 3.0 folder to create backups. The program file is installed under *C:\Isodat_Backups*.

NOTICE A backup created by the VersionHandler program does not include the User folder. Measurement data such as configurations, methods, sequences and result files are not saved. Save the User folder and all measurement data before starting the installation. ▲

Isodat 3.0 can still open and operate methods and sequences created with older version of Isodat that do not include GC or LC devices.

Already existing methods and sequences for GC and LC devices will become incompatible when changing from Trace GC Ocx to Foundation GC drivers.

❖ To perform a backup

1. Close all Isodat applications and the Isodat system.
2. Open the Isodat 3.0 folder.



3. Double-click **Version Handler** to open **VersionHandler**, see [Figure 2-1](#).

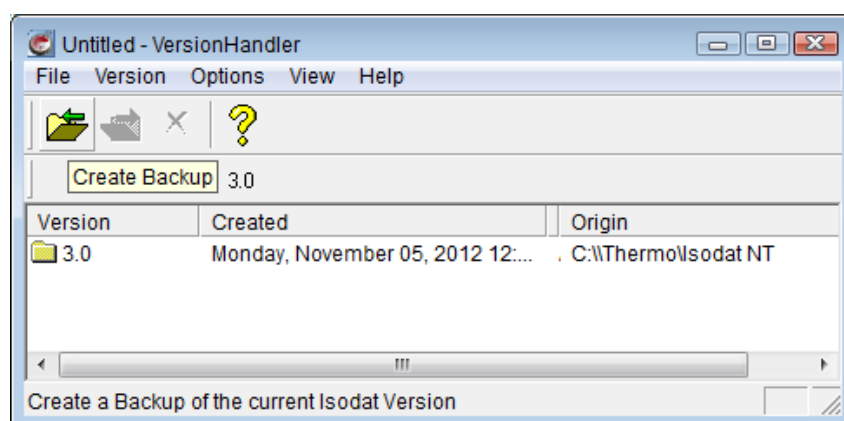


Figure 2-1. Version Handler of Isodat

4. Click  to open the **Create Backup Version** dialog, see [Figure 2-2](#).

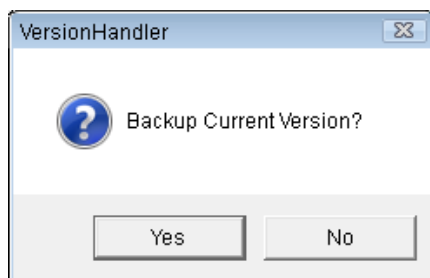


Figure 2-2. Create Backup dialog

5. Click **Yes** to start the backup of your current version.

The **Creating Backup** progress window is shown while the backup is created, see [Figure 2-3](#).

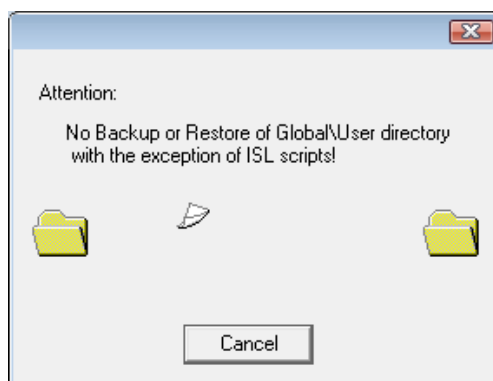


Figure 2-3. Create Backup dialog

6. Wait while the backup is being created.

Preparation

Turning User Account Control (UAC) Off

Turning User Account Control (UAC) Off

- ❖ To turn User Account Control (UAC) off



1. Click the **Start** button .
2. Select **Control Panel**.
The **Adjust your computer's settings** window opens.
3. In the upper right corner, click the arrows next to **View by** to open the drop-down menu, see [Figure 2-4](#).

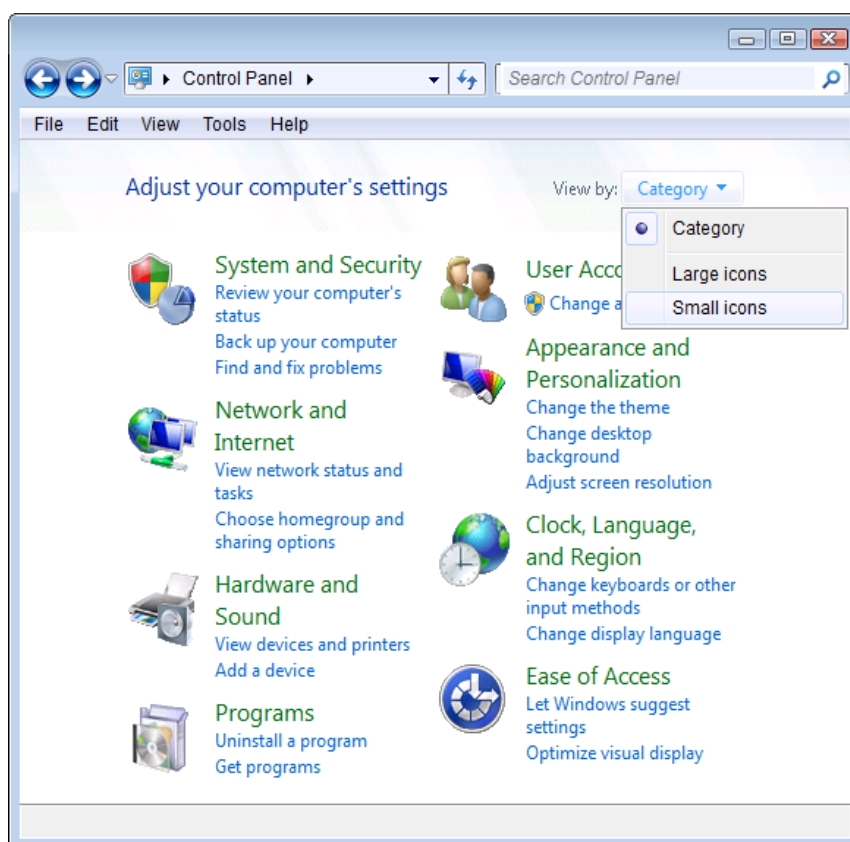


Figure 2-4. Adjust Control Panel View

4. Select **Small icons**.

5. Click **User Accounts**, see [Figure 2-5](#).

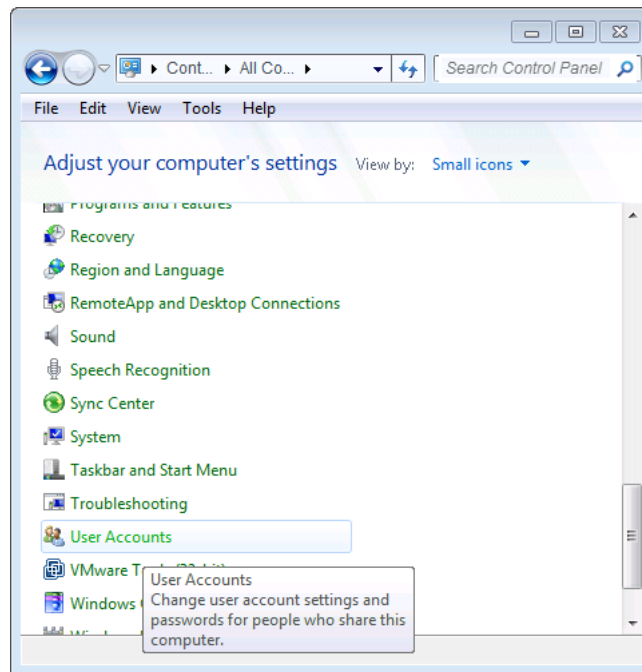


Figure 2-5. Control Panel User Accounts

NOTICE If **User Accounts** is not listed, your rights might not permit it. Contact your system administrator. ▲

6. Click **Change User Account Control settings**, see [Figure 2-6](#).

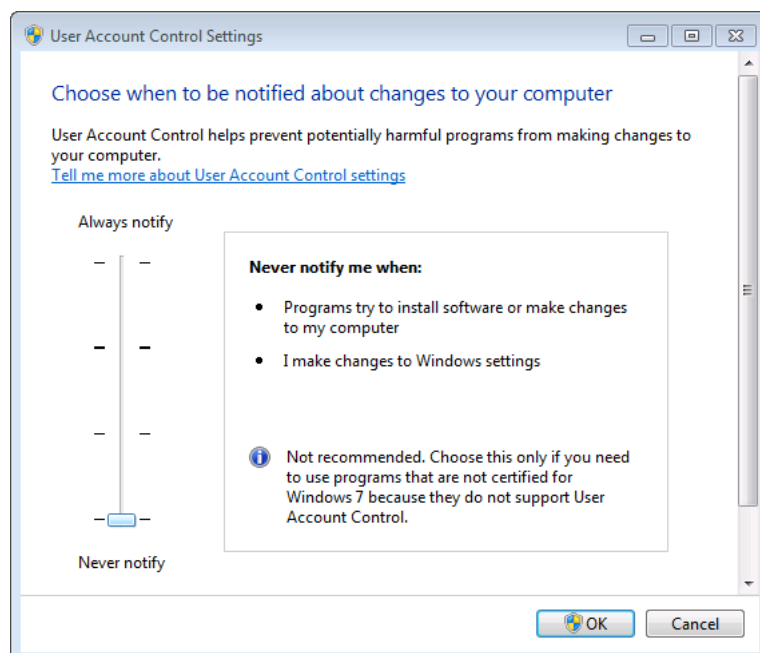



Figure 2-6. User Account Control Settings dialog

Preparation

Turning User Account Control (UAC) Off

7. Drag and drop the slider to position **Never notify**.
8. Click  .
9. If you are prompted for an administrator password or confirmation, contact your system administrator.
10. Restart your computer.

Assigning Administrator Rights for Installation of Fiberline Driver

During the first installation Isodat copies the fiberline drivers to the System32 folder of your Windows system. Deny all automatically upcoming attempts to install the device driver for the Fiberline card.

If your fiberline driver has not been installed yet, follow the procedure below.

❖ **To assign administrator rights to the installation of the fiberline driver**



1. Click the **Start** button .
2. Select **Control Panel**.
The **Adjust your computer's settings** window opens.
3. Click the arrows next to **View by** to open the drop-down menu and select **Small icons**.
4. Click **Administrative Tools**, see [Figure 2-7](#).

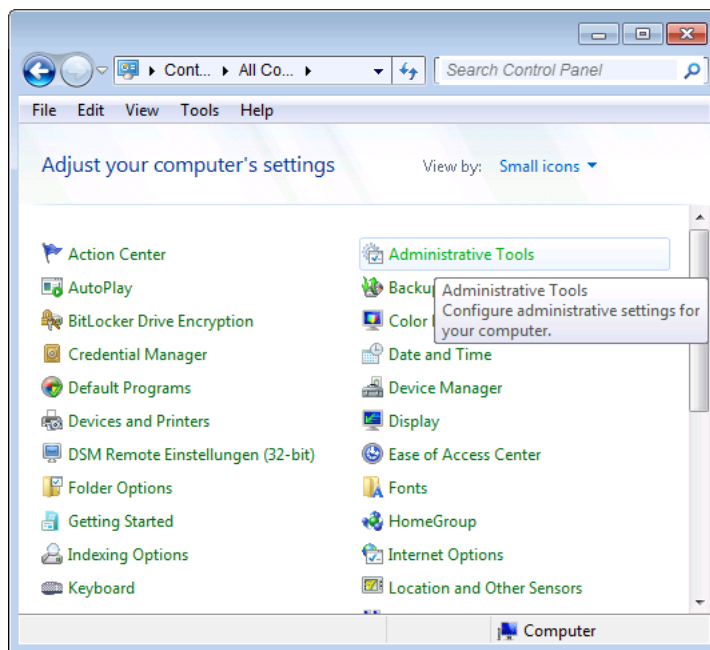


Figure 2-7. Control Panel Administrative Tools

Preparation

Assigning Administrator Rights for Installation of Fiberline Driver

5. In the window of the Administrative Tools, right-click **Computer Management**, see [Figure 2-8](#).

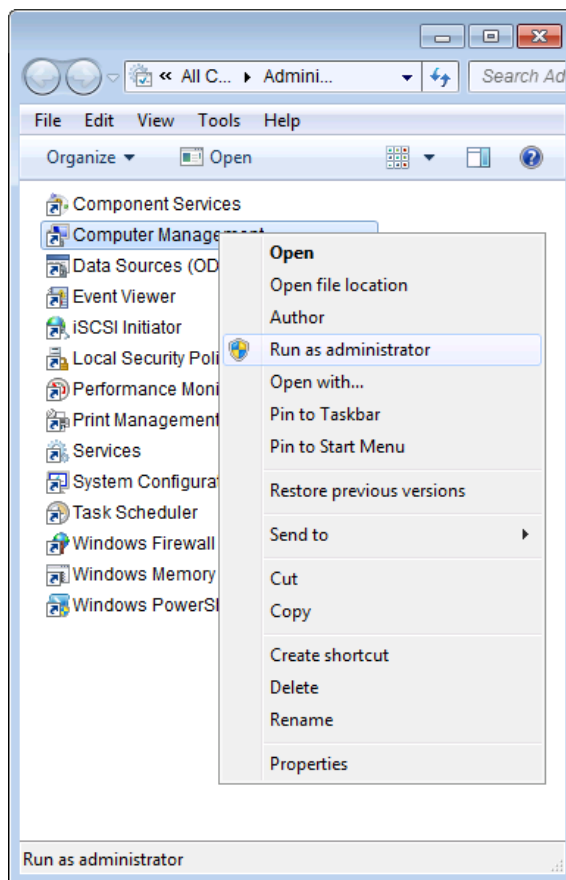


Figure 2-8. Administrative Tools context menu Computer Management

6. In the context menu, select **Run as administrator**.
The **Computer Management** window opens, see [Figure 2-9](#).

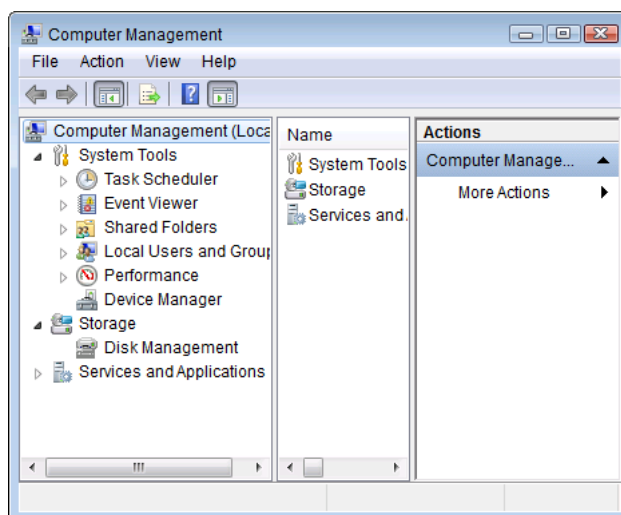


Figure 2-9. Computer Management context menu

7. Click **File > Exit** to close the program.
8. Close all Control Panel windows.

Preparation

Assigning Administrator Rights for Installation of Fiberline Driver

Chapter 3 Installation of Isodat

With Isodat 3.0, and the Isodat Service Pack 3.0.0.88, the software drivers for Foundation™2.2 are made available.

NOTICE Existing installations of Foundation 2.1 that are used to operate Accela™ AS systems are tolerated during installation of the new driver and can still be used after installation. ▲

Table 3-1 lists the Xcalibur and Foundation versions and the supported software drivers for the peripherals for each version. Surveyor AS and Surveyor MS Pump are only available for Windows XP operating system:

Table 3-1. Supported drivers for Xcalibur/Foundation software

Software version	Supported drivers
Xcalibur 1.4	Surveyor AS, Surveyor MS Pump, AS 3000
Foundation 2.1	Accela AS, Accela Pump 600, Surveyor AS, Surveyor MS Pump
Foundation 2.2	Accela AS, Accela Pump 600, Surveyor AS, Surveyor MS Pump, AS 1310, AS 3000, TriPlus AS, Trace GC, TRACE 1310, TriPlus RSH

NOTICE Before you start the installation of the Isodat Service Pack 3.0.0.88, make sure that Isodat 3.0 is installed on your controlling computer. ▲

NOTICE Thermo Scientific recommends not to install drivers that are not used. ▲

This chapter describes the following:

- “Installing Basic Isodat” on page 2
- “Installing Isodat Service Pack” on page 11
- “Assigning Administrator Rights to all Applications of Isodat” on page 39

Installing Basic Isodat

This chapter described the basic installation of Isodat 3.0.

NOTICE Thermo Fisher Scientific recommends you to select **Default Isodat Installation** first and to install Foundation 2.2 (Windows 7 operating system) or Xcalibur 1.4 (Windows™ XP operating system) with the Service Pack. For installation of the Service Pack, see “[Installing Isodat Service Pack](#)” on page 11. ▲

❖ **To install Isodat under Windows 7 operating system**

1. Open your file browser and browse to the Isodat installation file.
2. Right-click the Isodat basic installation file, for example, **Isodat 3.0.0.83 Installation.exe**.
3. In the context menu, click **Run as administrator**, see [Figure 3-1](#).

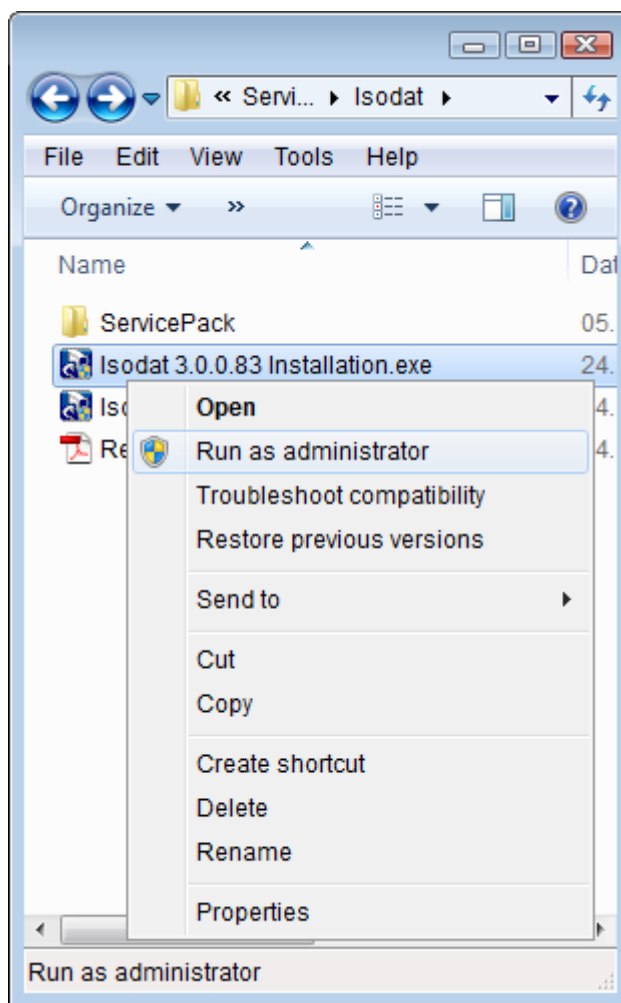


Figure 3-1. Running Isodat 3.0 basic file as administrator

The setup routine starts immediately.

4. If the **User Account Control** box dialog opens asking “Do you want to allow the following program from an unknown publisher to make changes to this computer?”, click **Yes** to confirm.

The InstallShield Wizard reads the contents of the package, see [Figure 3-2](#).

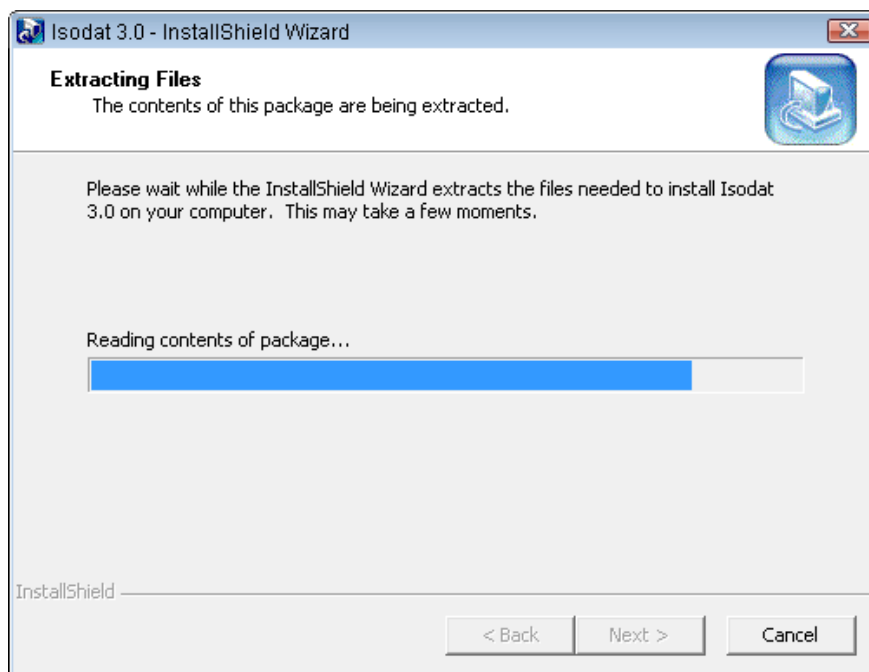


Figure 3-2. InstallShield Wizard reading contents

The files are extracted, see [Figure 3-3](#).

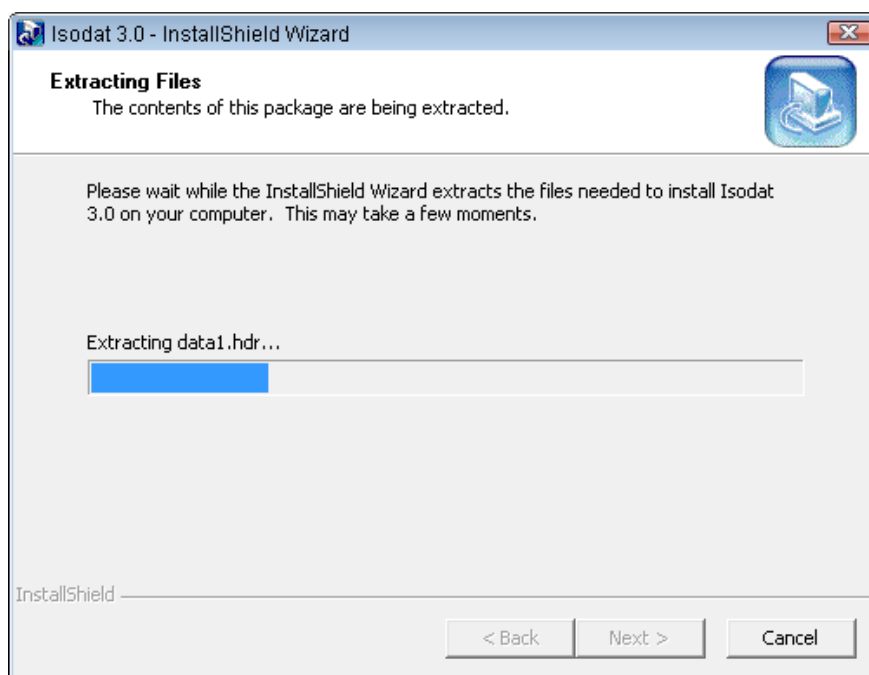


Figure 3-3. InstallShield Wizard extracting files

5. Wait while the Isodat setup is preparing the InstallShield Wizard, see [Figure 3-4](#).

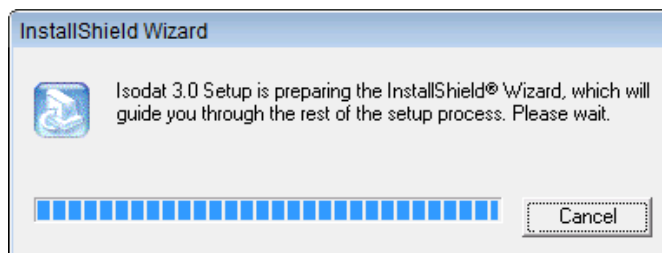


Figure 3-4. Isodat setup preparing InstallShield Wizard

6. When the **Installation under Windows 7** dialog opens, select **Proceed with installation**, see [Figure 3-5](#).

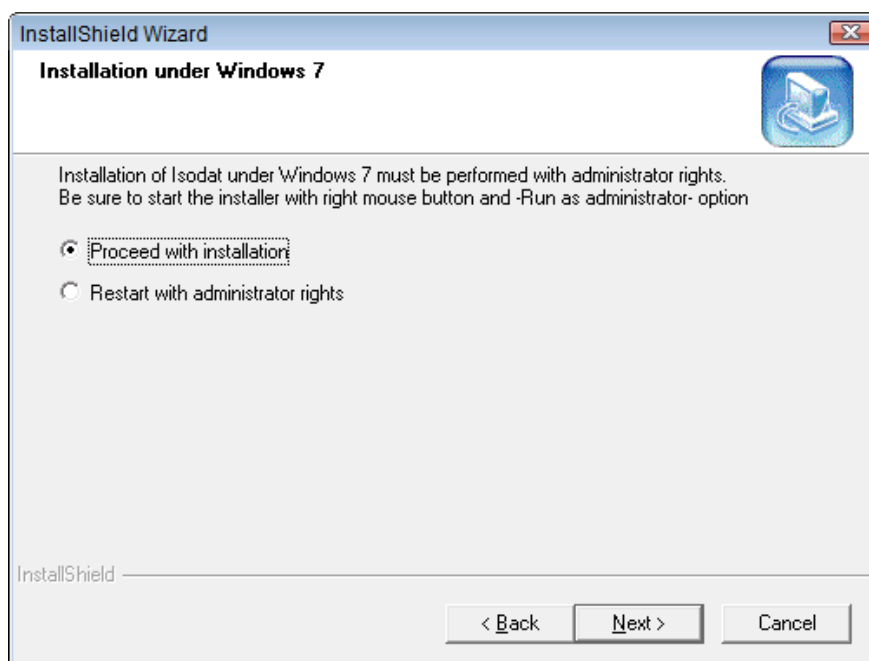


Figure 3-5. Proceed with installation

NOTICE If the setup was started without administrator rights, select **Restart with administrator rights** and click **Next** to stop the installation. Start again with administrator rights. ▲

7. Click **Next**.
The **Isodat and Xcalibur options** dialog opens, see [Figure 3-6](#).

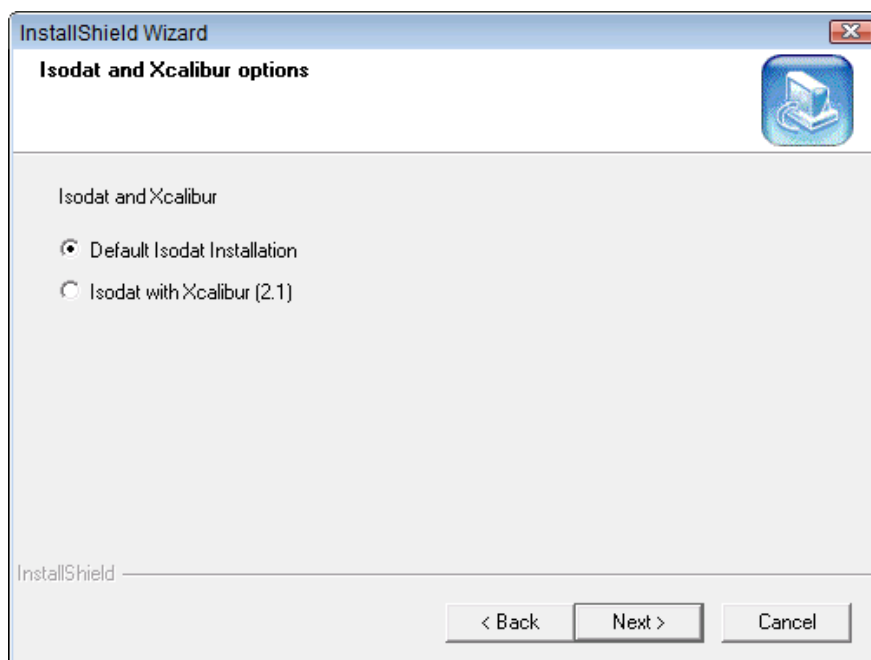


Figure 3-6. Selecting default installation

8. Select **Default Isodat Installation**.

NOTICE Additionally, the installation procedures **Isodat with Xcalibur (1.4) Support** and **Isodat with installed Xcalibur (1.4)** are provided for installation on Windows XP operating systems. ▲

9. Click **Next**.
The Welcome dialog of the InstallShield™ Wizard for Isodat 3.0 opens, see [Figure 3-7](#).

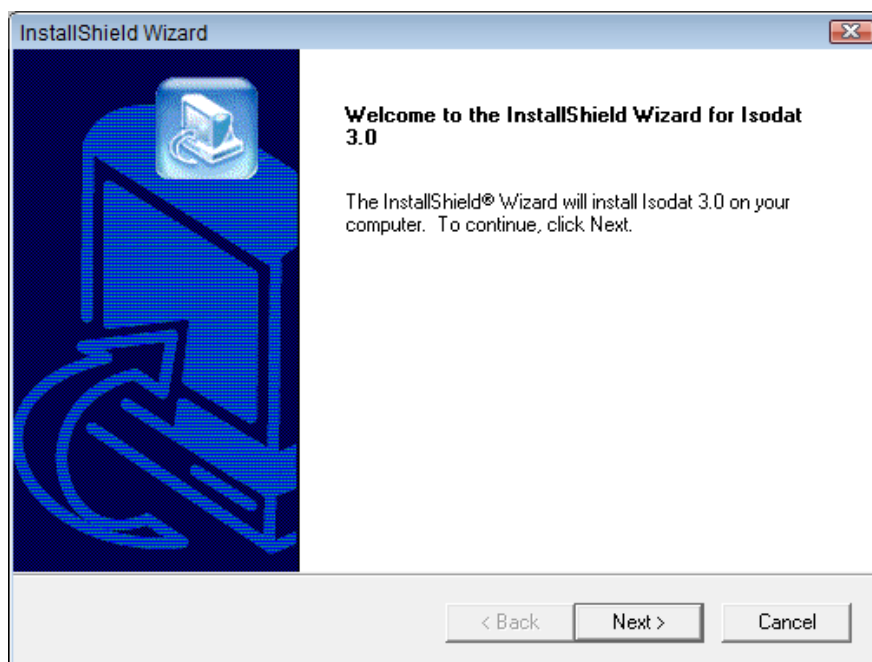


Figure 3-7. Welcome to InstallShield Wizard for Isodat

10. Click **Next**.
The License Agreement dialog opens, see [Figure 3-8](#).

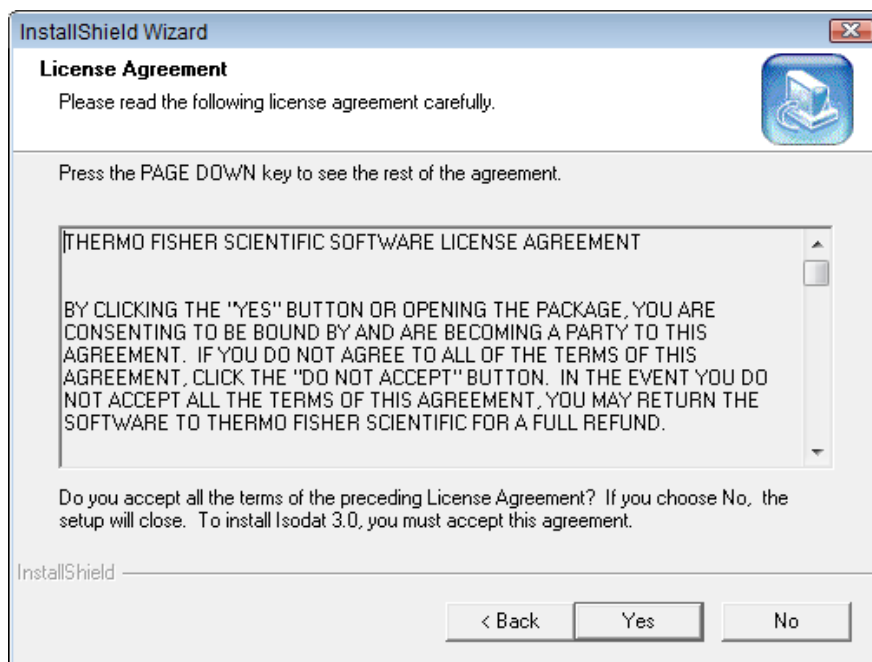


Figure 3-8. License agreement

11. Carefully read the license agreement.

- Click **Yes** to continue the installation.
The **Customer Information** dialog opens, see [Figure 3-9](#).

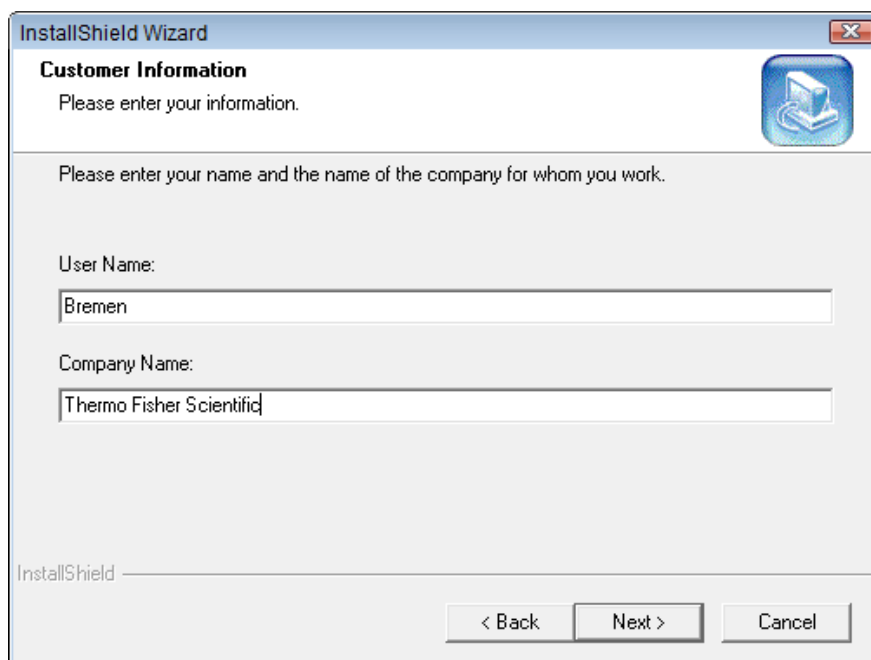


Figure 3-9. Entering customer information

- Enter **User Name** and **Company Name**.
- Click **Next**.
The **Select Setup Type** dialog opens, see [Figure 3-10](#).

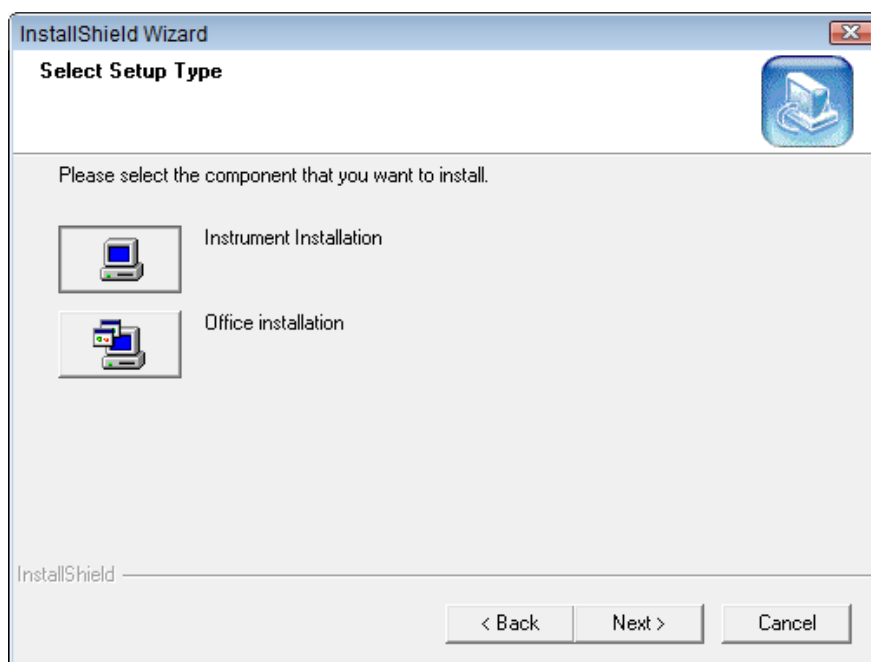


Figure 3-10. Selecting setup type

15. Select **Instrument Installation** and click **Next**.
The **Installed Interfaces** dialog opens, see [Figure 3-11](#).

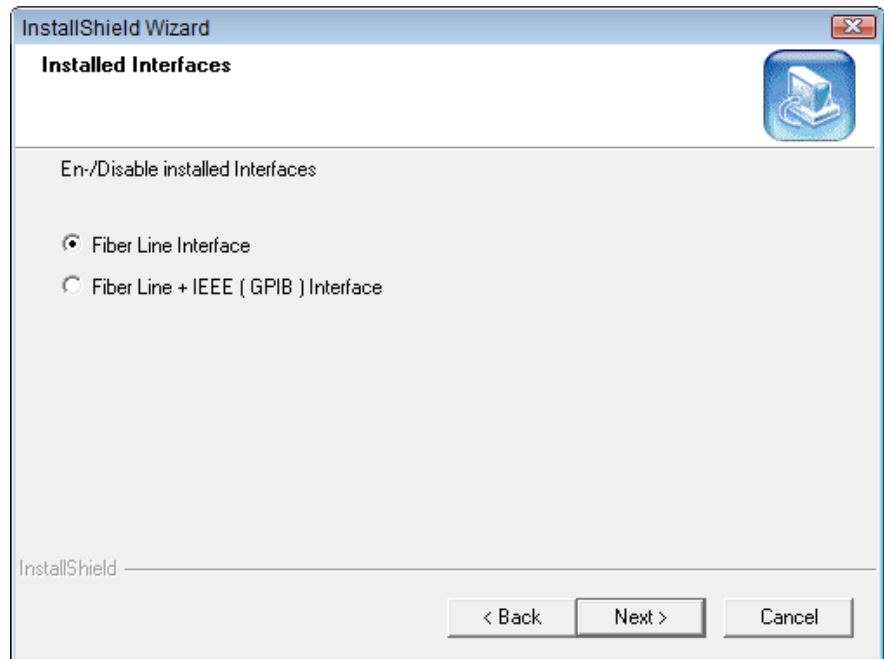


Figure 3-11. Selecting fiber line interface

16. Select **Fiber Line Interface**. Click **Next**.
The **Choose Destination Location** dialog opens, see [Figure 3-12](#).

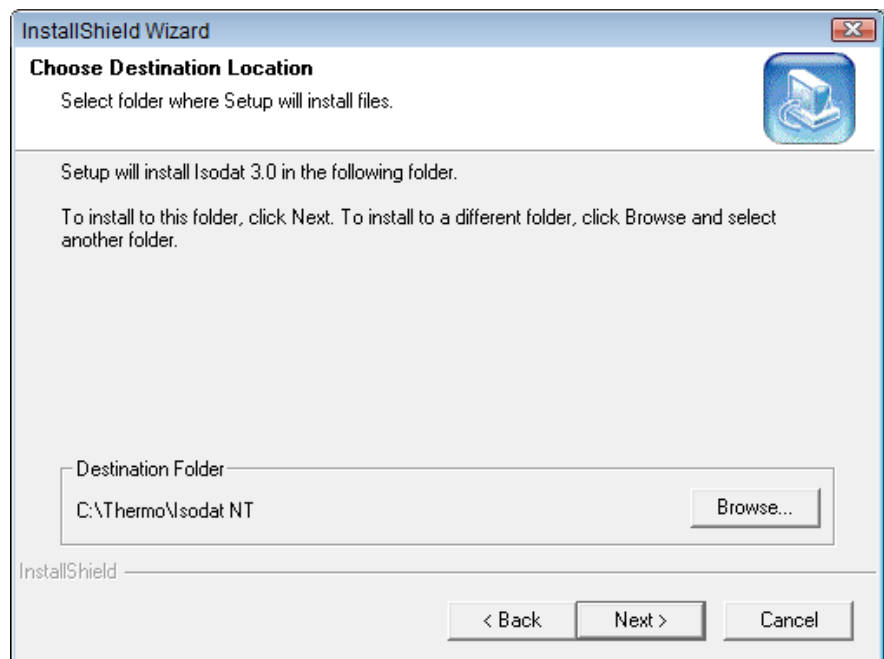


Figure 3-12. Selecting installation folder

- Click **Browse** to select the installation folder.
A default destination is proposed, see [Figure 3-13](#).

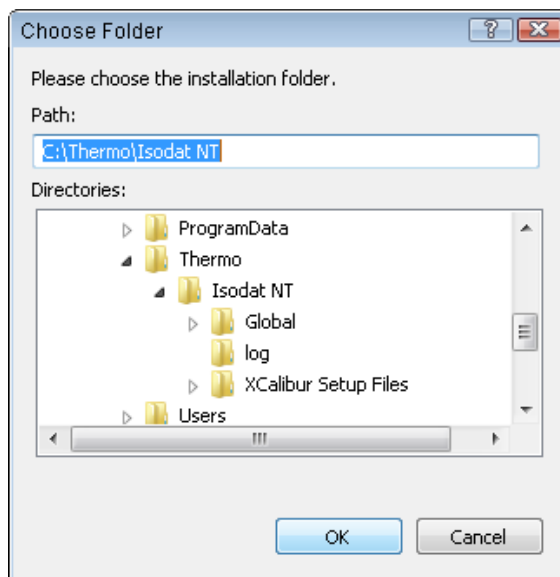


Figure 3-13. Choose Folder dialog

- Select a folder and click **OK**.
The default destination is recommended.
- Click **Next**.
Several progress messages are shown, see, for example, [Figure 3-14](#).

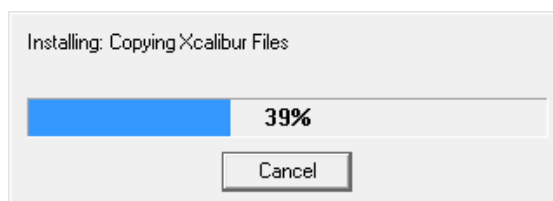


Figure 3-14. Example of progress message

A message informs you that administrator rights need to be assigned to all applications of Isodat after installation, see [Figure 3-15](#).

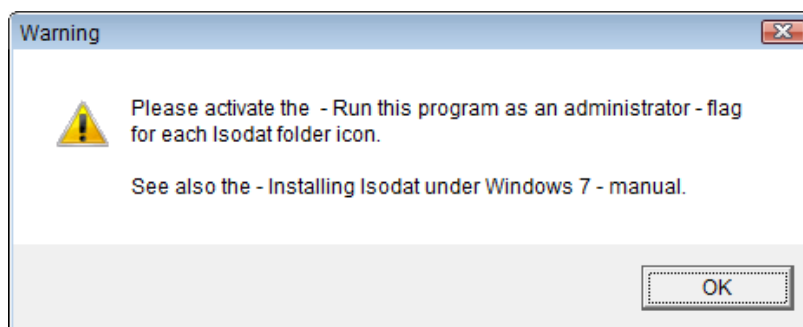


Figure 3-15. Reminder to assign administrator rights

20. Click **OK**.

The **InstallShield Wizard Complete** dialog opens, see [Figure 3-16](#).

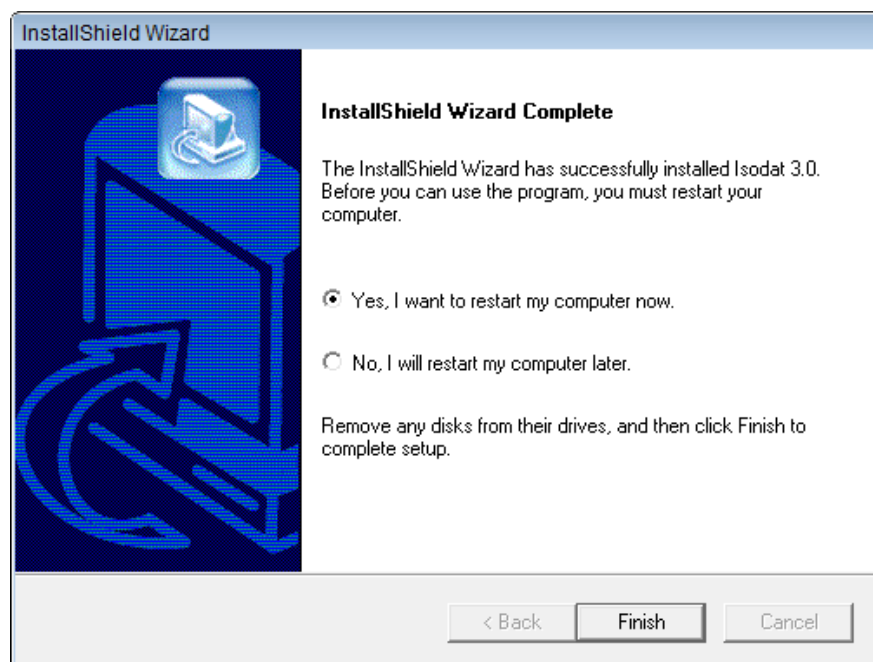


Figure 3-16. Wizard complete

21. Select **Yes, I want to restart my computer now** and click **Finish**.
Isodat 3.0 is now installed and the computer will be restarted.

22. When your computer has restarted, proceed with [“Assigning Administrator Rights to all Applications of Isodat”](#) on [page 39](#).

23. If you wish to install Foundation 2.2, then proceed with [“Installing Isodat Service Pack”](#) on [page 11](#).

Installing Isodat Service Pack

In the first installation procedure, the Isodat Service Pack 3.0.0.88 installs Foundation 2.2, see “[Installing Foundation 2.2](#)” on [page 11](#).

The installation of LC and GC Devices is performed with a second installation run of Isodat Service Pack 3.0.0.88. As an example, the installation procedure for GC Devices is described in “[Installing GC Devices](#)” on [page 26](#).

Installing Foundation 2.2

The first installation run of the Isodat Service Pack 3.0.0.88 installs Foundation 2.2.

❖ To install Foundation 2.2 under Windows 7 operating system

1. Open your file browser and browse to the installation file.
2. Right-click the Isodat Service Pack file, for example, **Isodat Service Pack 3.0.0.88.exe**.

3. Select **Run as administrator** from the context menu, see [Figure 3-17](#).

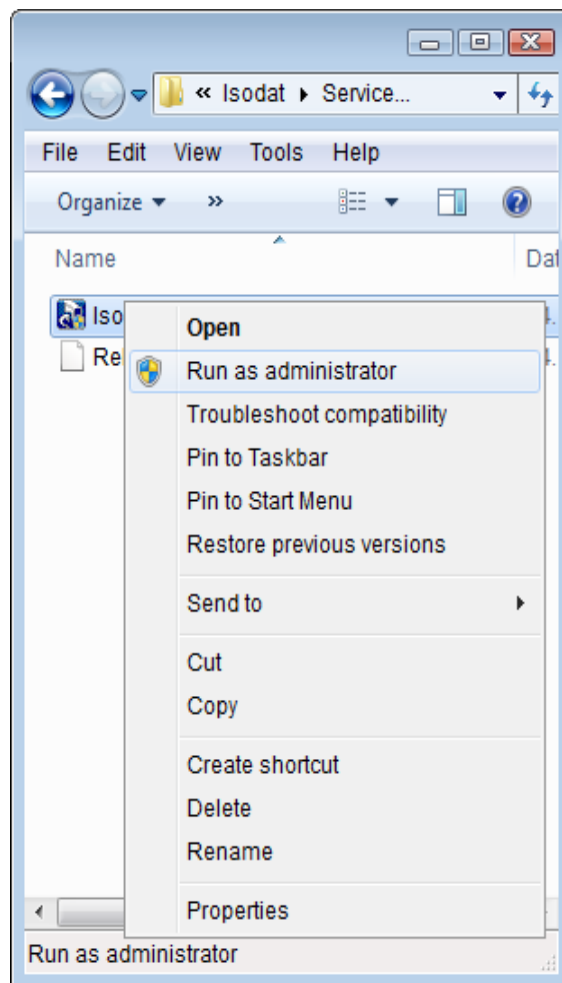


Figure 3-17. Running Isodat Service Pack as administrator

The setup routine starts immediately.

4. If the **User Account Control** box dialog opens with “Do you want to allow the following program from an unknown publisher to make changes to this computer?”, click **Yes** to confirm.

Isodat
InstallShield
Wizard



The InstallShield Wizard reads the contents of the package, see [Figure 3-18](#).

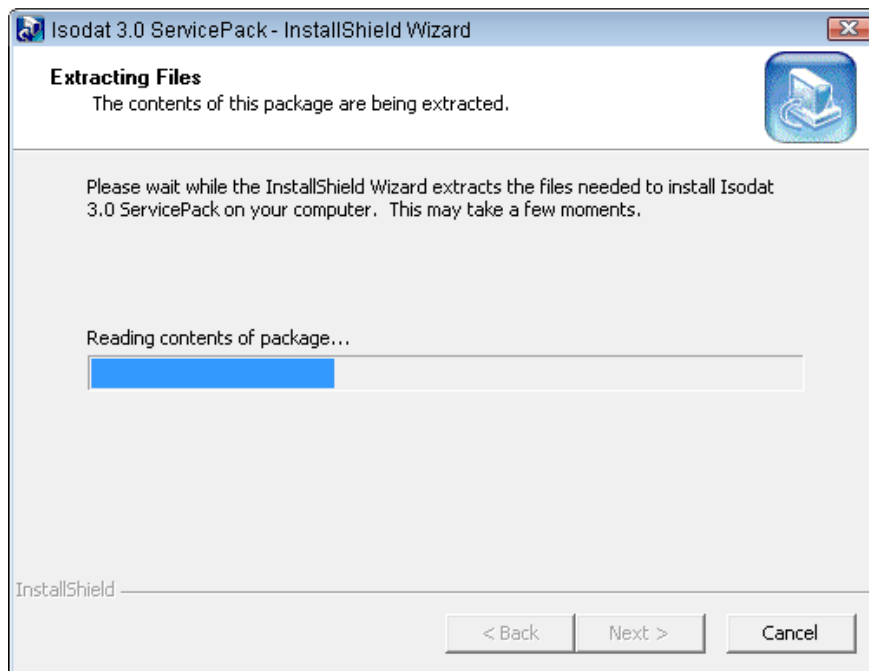


Figure 3-18. InstallShield Wizard reading contents

The files are extracted, see [Figure 3-19](#).

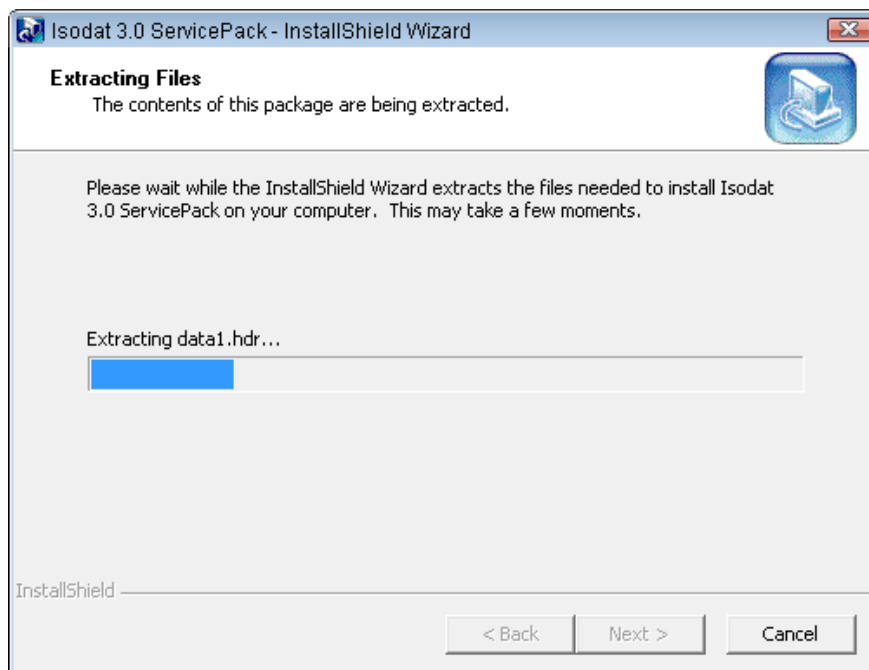


Figure 3-19. InstallShield Wizard extracting files

5. Wait while the Isodat Service Pack setup is preparing the InstallShield Wizard, see [Figure 3-20](#).

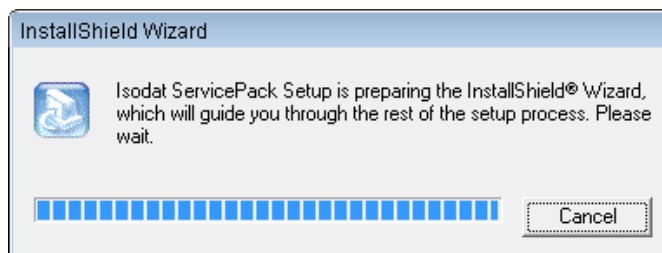


Figure 3-20. Isodat Service Pack setup preparing InstallShield Wizard

6. When the **Installation under Windows 7** dialog opens, select **Proceed with installation**, see [Figure 3-21](#).

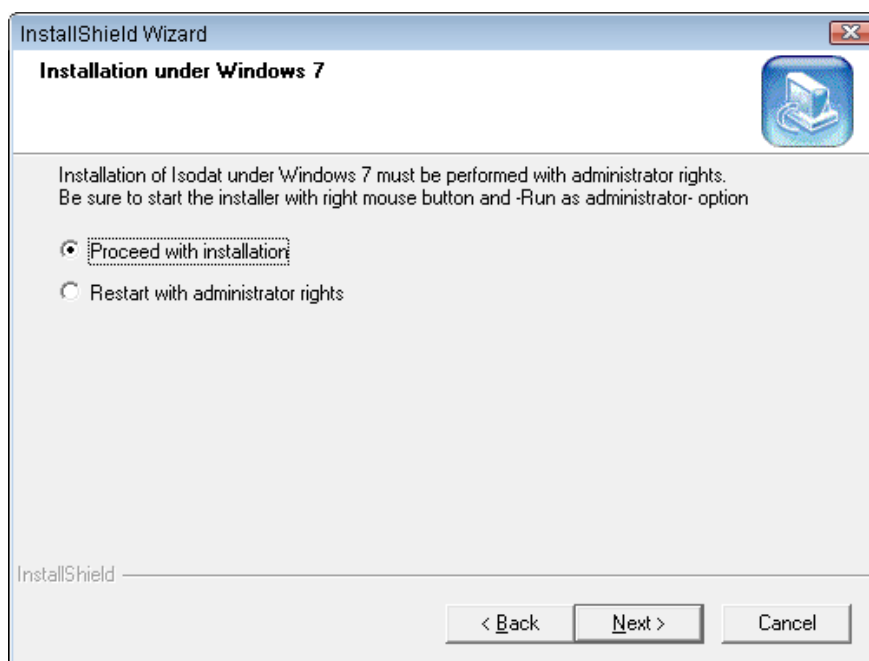


Figure 3-21. Proceed with installation

NOTICE If the setup was started without administrator rights, select **Restart with administrator rights** and click **Next** to stop the installation. Start again with administrator rights. ▲

7. Click **Next**.
The Isodat and Foundation dialog opens, see [Figure 3-22](#).

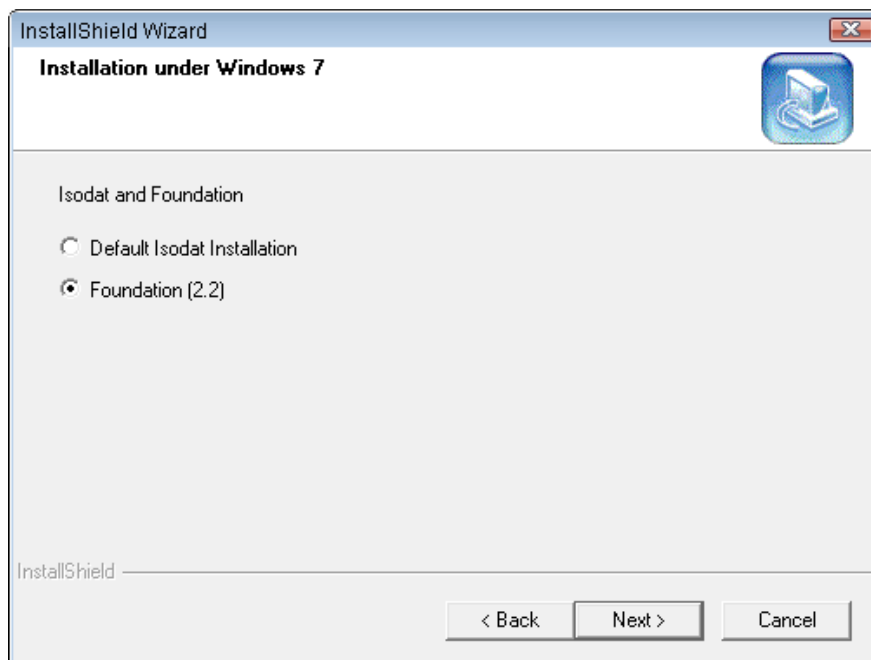


Figure 3-22. Isodat and Foundation dialog under Windows 7 operating system

8. Select **Foundation 2.2**.
If the setup finds Foundation 2.1 files on the controlling computer, the dialog in [Figure 3-22](#) will also show the selection to upgrade Foundation 2.1 to Foundation 2.2. In this case, select the appropriate radio button and follow the instructions. If Foundation 2.1 is uninstalled, start the Isodat Service Pack 3.0.0.88 again to install Foundation 2.2.

9. Click **Next**.
The Welcome dialog of the InstallShield Wizard for the Isodat Service Pack opens, see [Figure 3-23](#).

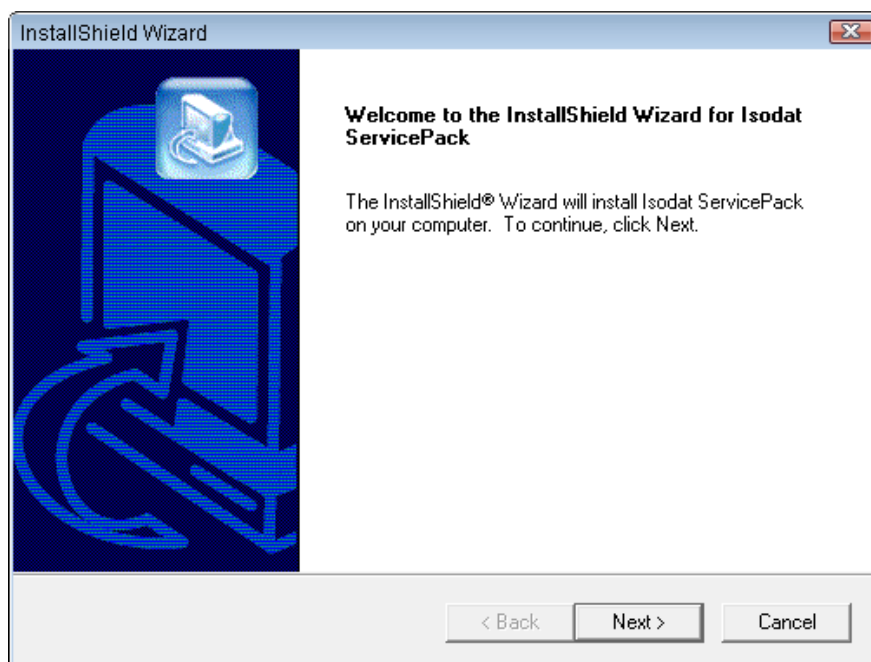


Figure 3-23. Welcome to InstallShield Wizard for Isodat Service Pack

10. Click **Next**.
The **Setup Status** window opens, see [Figure 3-24](#).

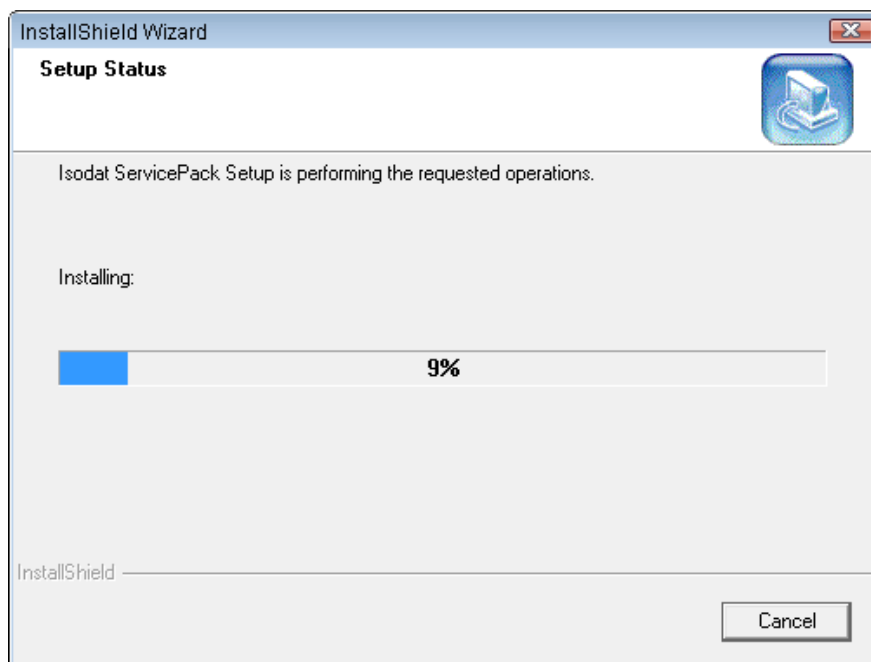


Figure 3-24. Setup Status of InstallShield Wizard for Isodat Service Pack

11. Wait while the InstallShield Wizard is installing. An **Information** dialog opens, see [Figure 3-25](#).

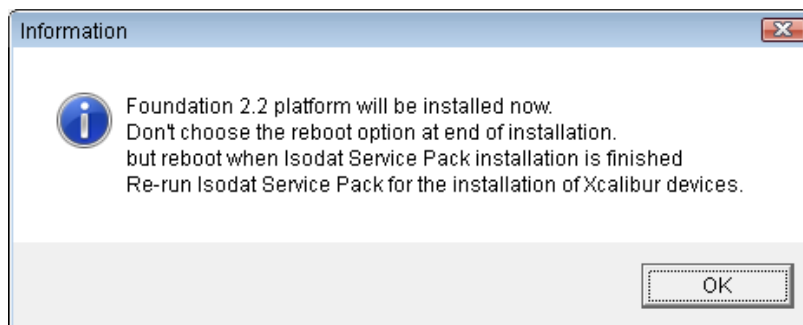


Figure 3-25. InstallShield Wizard information dialog

12. Read the information carefully.

NOTICE For the installation of the Xcalibur devices (example described with GC), see [“Installing GC Devices”](#) on [page 26](#). ▲

13. Click **OK**.
The **Setup Status** window of the InstallShield Wizard stays in the background showing 100%, see [Figure 3-26](#).

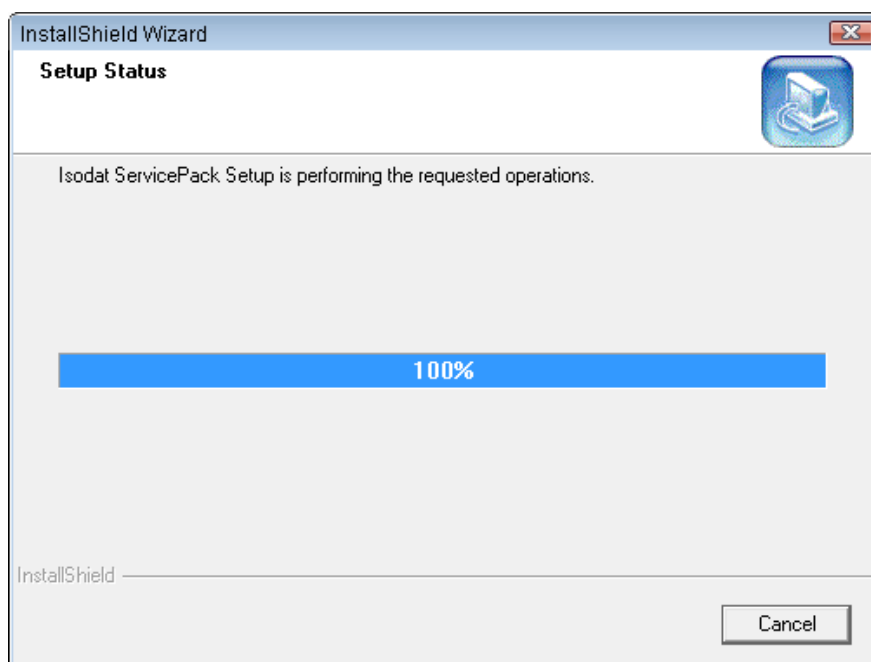


Figure 3-26. Setup Status of InstallShield Wizard for Isodat Service Pack



The Thermo Foundation 2.2 **Preparing Setup** window opens, see [Figure 3-27](#).

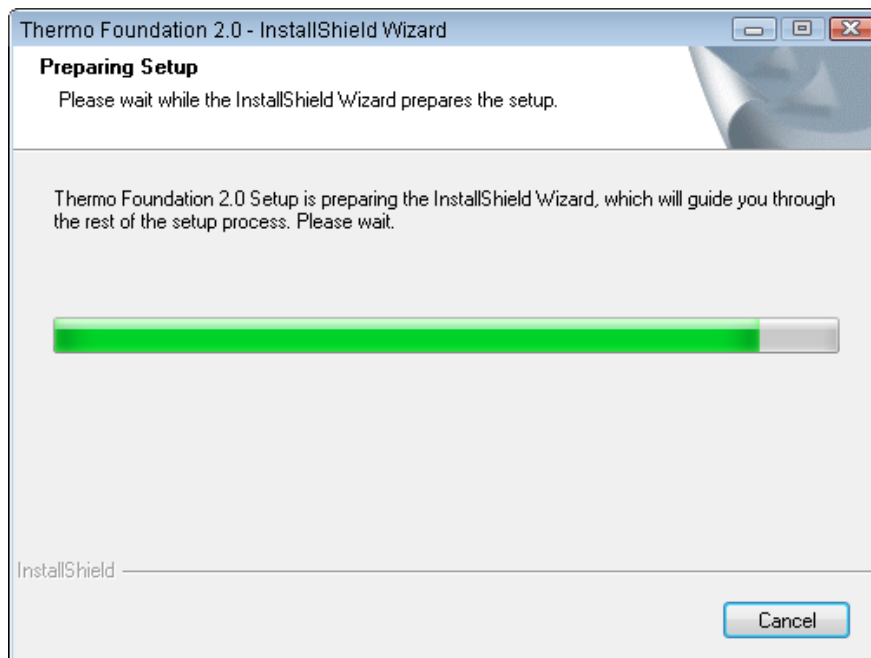


Figure 3-27. Thermo Foundation 2.2 Preparing Setup window

14. Wait while the InstallShield Wizard of Thermo Foundation 2.2 is preparing the installation.
The Foundation 2.2 welcome dialog opens, see [Figure 3-28](#).

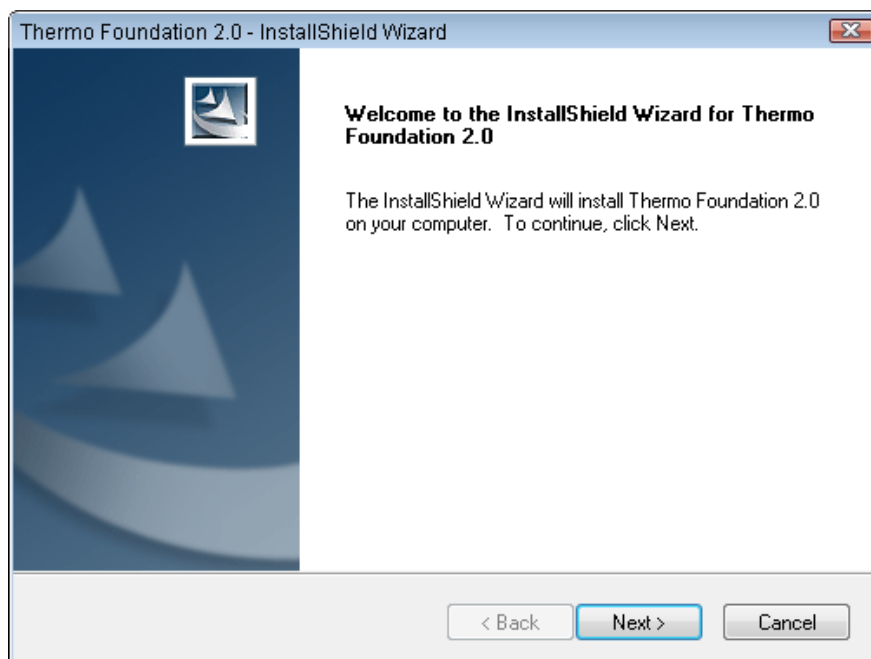


Figure 3-28. Isodat Service Pack Thermo Foundation 2.2 welcome

15. Click **Next**.

The **License Agreement** dialog opens, see [Figure 3-29](#).

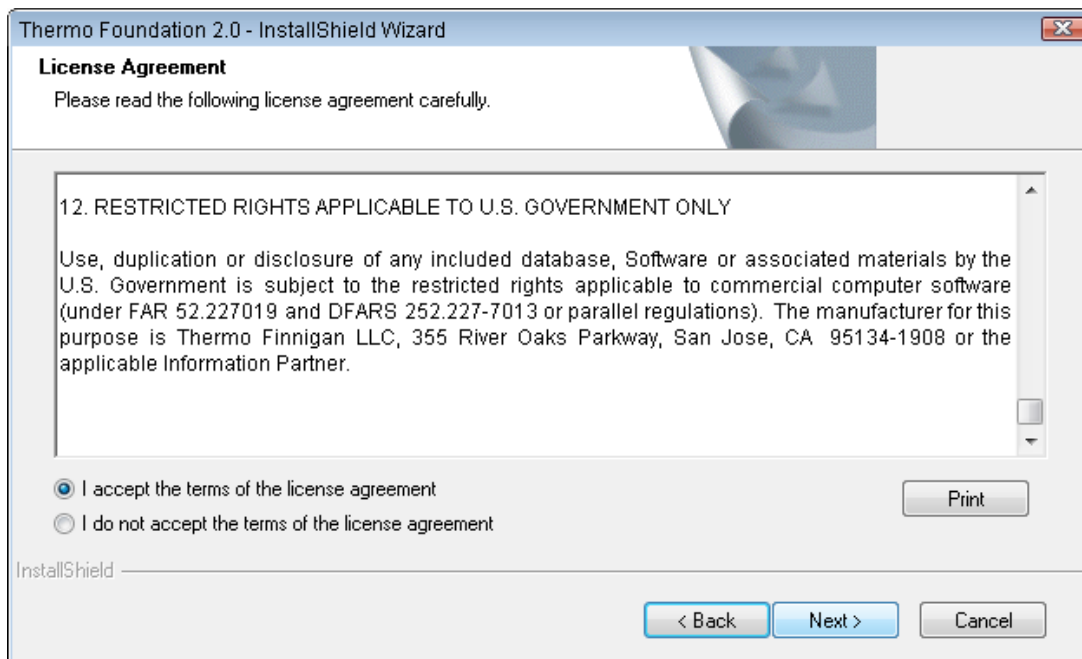
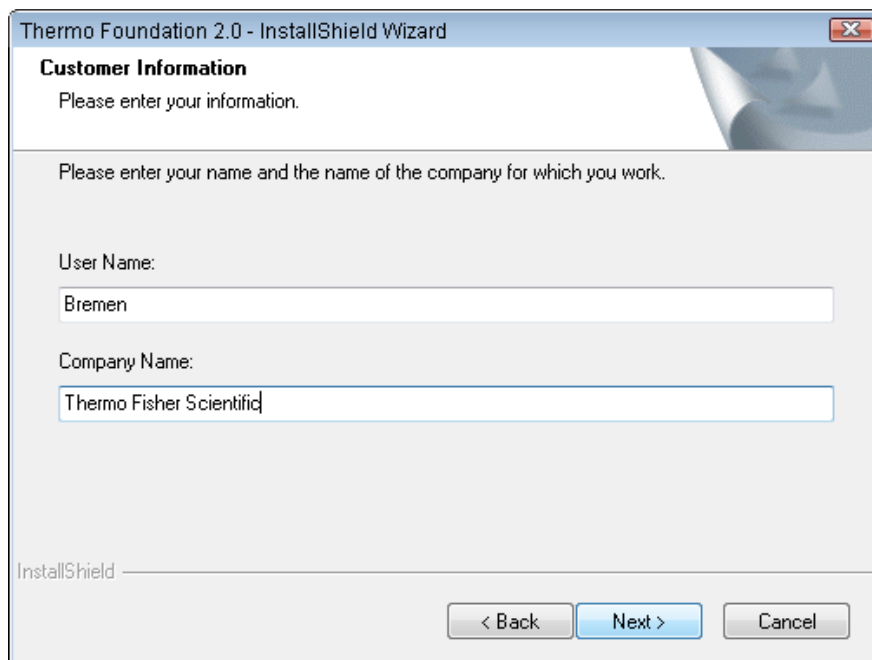


Figure 3-29. Isodat Service Pack Thermo Foundation 2.2 License Agreement

16. Read the license agreement carefully.

17. Select **I accept the terms of the license agreement**.

18. Click **Next**.
The **Customer Information** dialog opens, see [Figure 3-30](#).



The screenshot shows a Windows dialog box titled "Thermo Foundation 2.0 - InstallShield Wizard". The dialog has a header section with the title "Customer Information" and the instruction "Please enter your information." Below this, there is a sub-instruction: "Please enter your name and the name of the company for which you work." There are two text input fields: the first is labeled "User Name:" and contains the text "Bremen"; the second is labeled "Company Name:" and contains the text "Thermo Fisher Scientific". At the bottom of the dialog, there are three buttons: "< Back", "Next >" (which is highlighted in blue), and "Cancel". The "InstallShield" logo is visible in the bottom left corner of the dialog area.

Figure 3-30. Isodat Service Pack Thermo Foundation 2.2 customer information

19. Enter **User Name** and **Company Name**, in this example *Bremen* and *Thermo Fisher Scientific*.

20. Click **Next**.

The **Choose Destination Location** dialog opens, see [Figure 3-31](#).

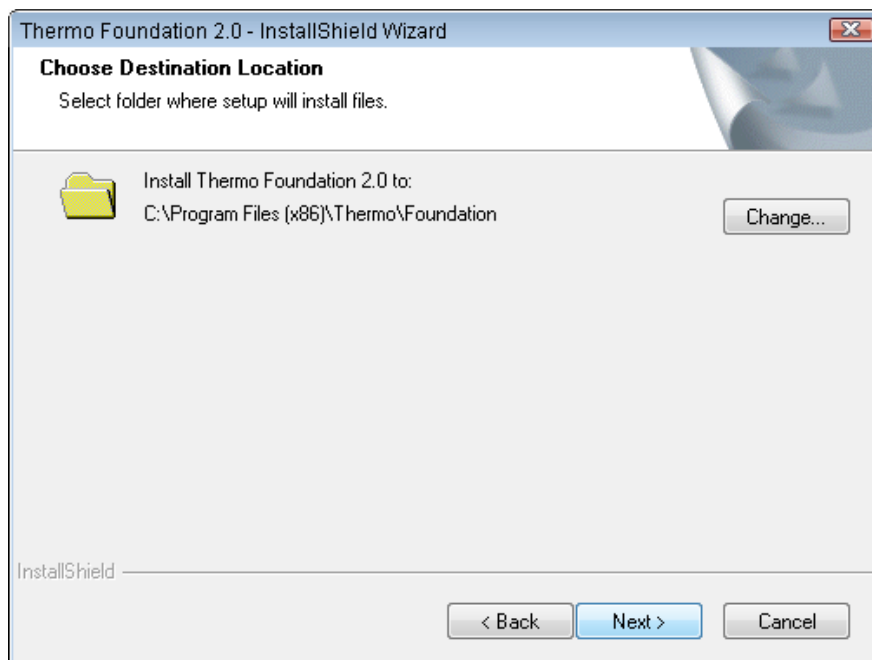


Figure 3-31. Selecting folder location for Foundation 2.2

21. Click **Change** to change the proposed default destination folder.

The Choose Folder dialog opens, see [Figure 3-32](#).

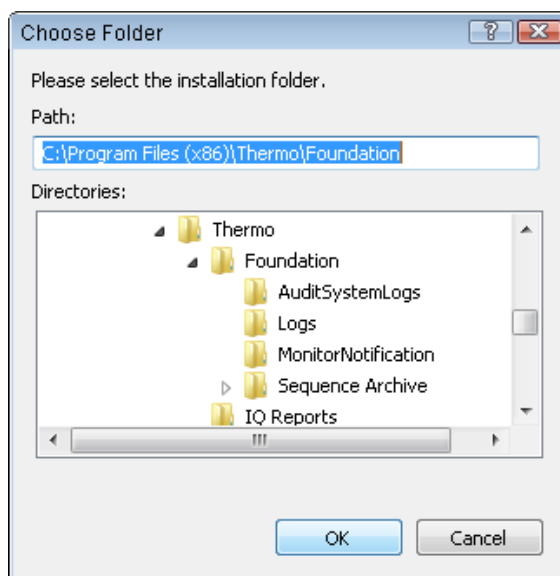


Figure 3-32. Choose Folder dialog

22. Select a folder and click **OK**.

23. Click **Next**.

The **Ready to install the Program** dialog opens, see [Figure 3-33](#).

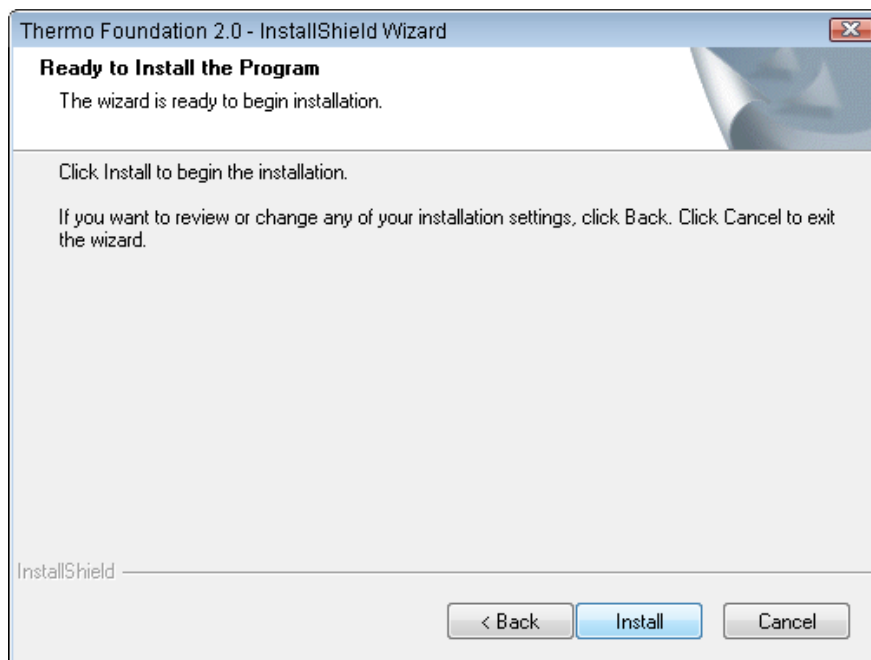


Figure 3-33. Ready to install dialog

24. Click **Install**.

The **Setup Status** window opens showing the progress bar, see [Figure 3-34](#).

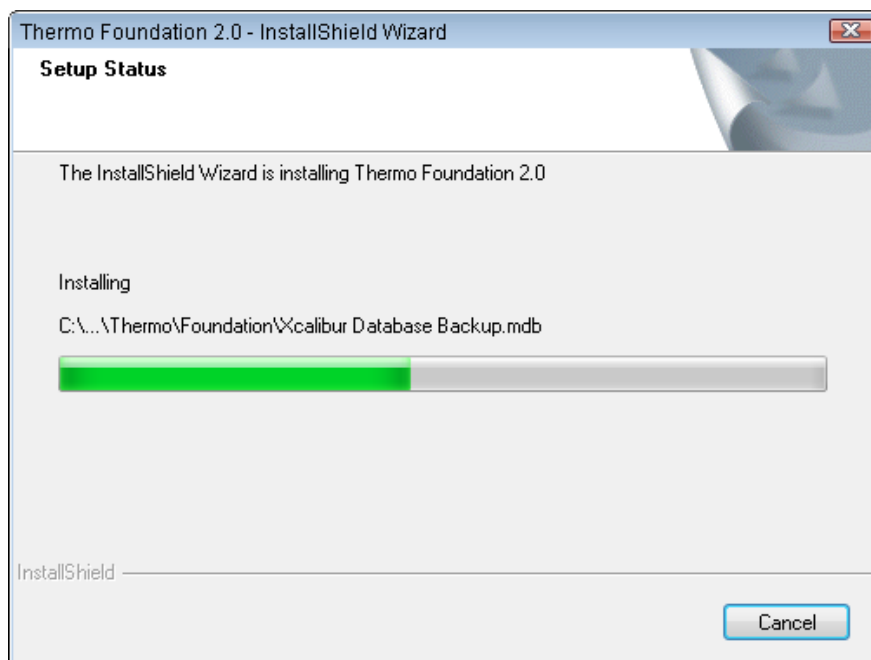


Figure 3-34. Ready to install dialog

25. Wait while the installation is in progress.
The Installation Verification is started, see [Figure 3-35](#).

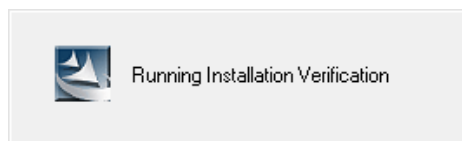


Figure 3-35. Running Installation Verification

26. Wait while the services are installed, see [Figure 3-36](#).

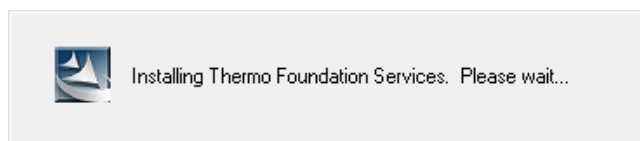


Figure 3-36. Installing services

The **Installation Qualification** dialog opens, see [Figure 3-37](#).

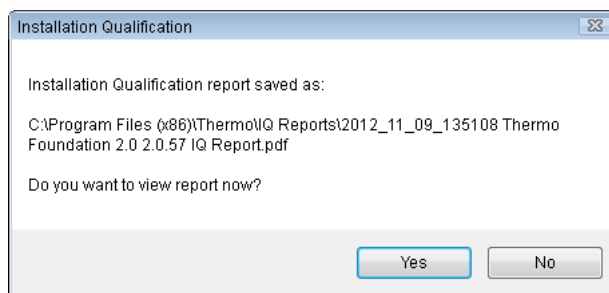


Figure 3-37. Installation Qualification dialog

With **Yes** an installation report can be viewed.

27. Click **No** to proceed.

The Thermo Foundation 2.2 **InstallShield Wizard Complete** dialog opens, see [Figure 3-38](#).

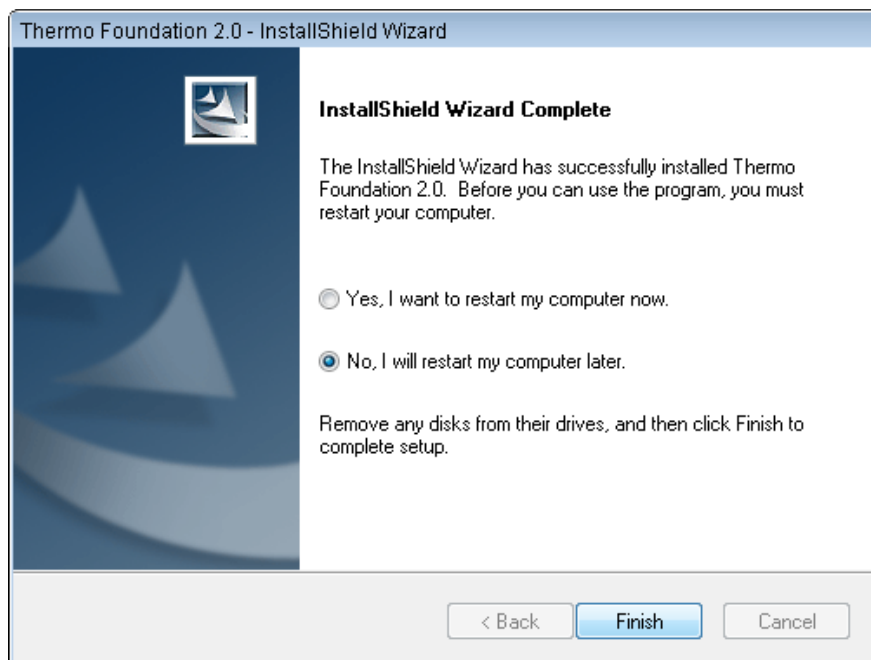


Figure 3-38. Installation of Thermo Foundation 2.2 complete

NOTICE Do not select the reboot option at the end of the installation of Thermo Foundation 2.2. otherwise, the installation might not be terminated correctly. ▲

28. Select **No, I will restart my computer later.**

Isodat
InstallShield
Wizard



The Isodat **InstallShield Wizard Complete** dialog opens, see [Figure 3-39](#).

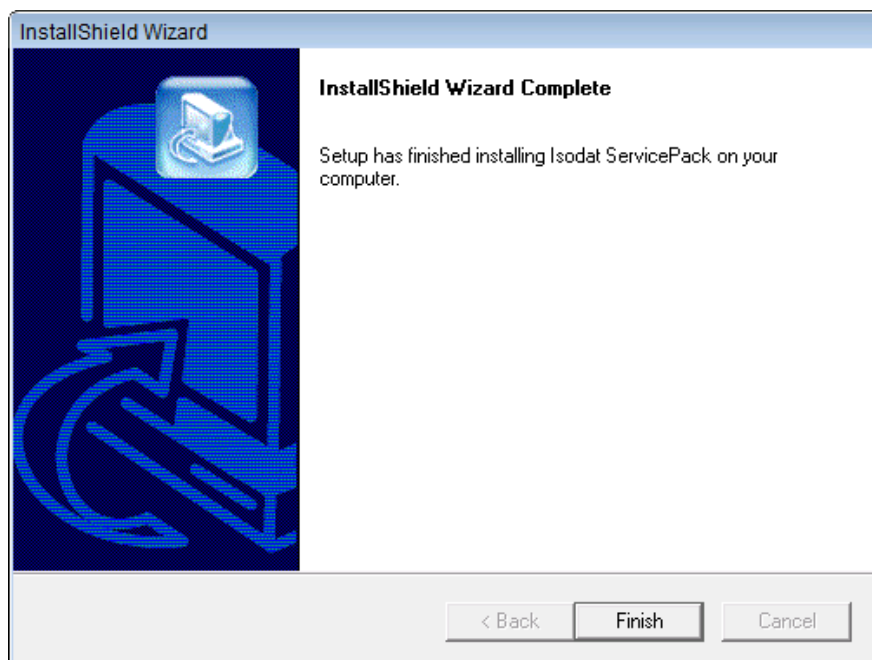


Figure 3-39. Installation of Isodat Service Pack complete

29. Click **Finish**.

A warning message is shown, see [Figure 3-40](#).

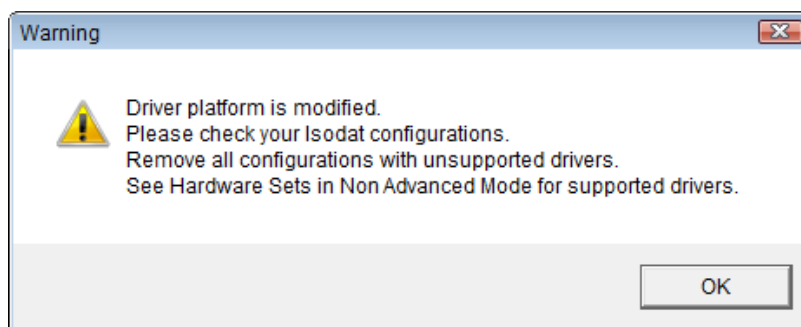


Figure 3-40. Driver platform modified message

30. Click **OK**.

The Isodat Service Pack has been installed.

31. Reboot your computer.

32. When your computer has restarted, proceed with [“Assigning Administrator Rights to all Applications of Isodat”](#) on [page 39](#).

33. To install GC or LC devices, see [“Installing GC Devices”](#) on [page 26](#).

Installing GC Devices

After Foundation 2.2 has been installed, the installation procedure of the Isodat Service Pack 3.0.0.88 must be started again to install GC or LC devices.

❖ **To install GC or LC devices with the Isodat Service Pack 3.0.0.88**

1. Open your file browser and browse to the installation file.
2. Right-click the Isodat Service Pack file, for example, **Isodat Service Pack 3.0.0.88.exe**.
3. Select **Run as administrator**, see [Figure 3-41](#).

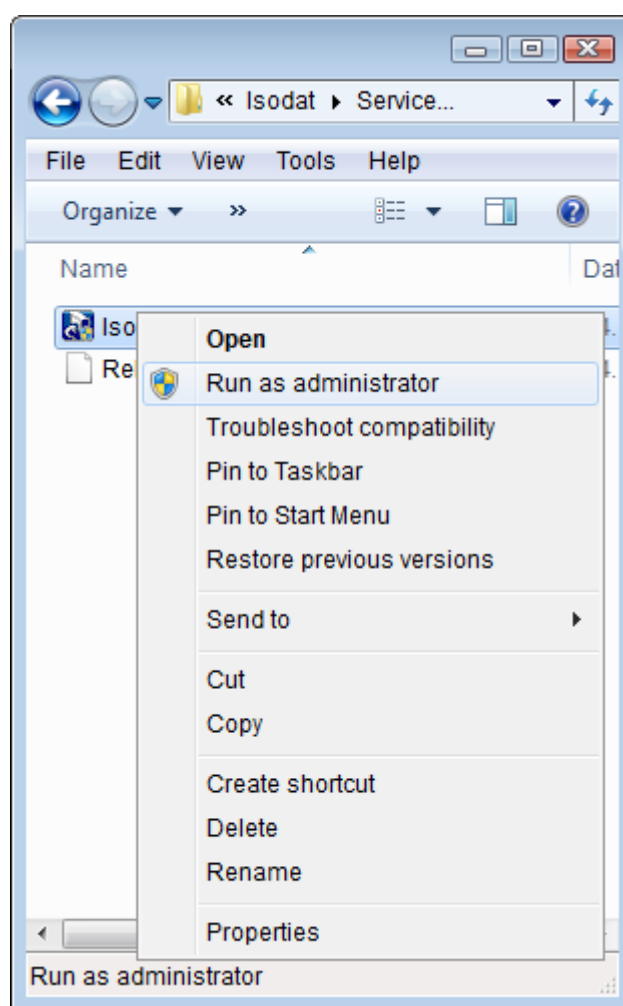


Figure 3-41. Running Isodat Service Pack as administrator

The setup routine starts immediately.

4. If the **User Account Control** box dialog opens with “Do you want to allow the following program from an unknown publisher to make changes to this computer?”, click **Yes** to confirm.

Isodat
InstallShield
Wizard



The InstallShield Wizard reads the contents of the package, see [Figure 3-42](#).

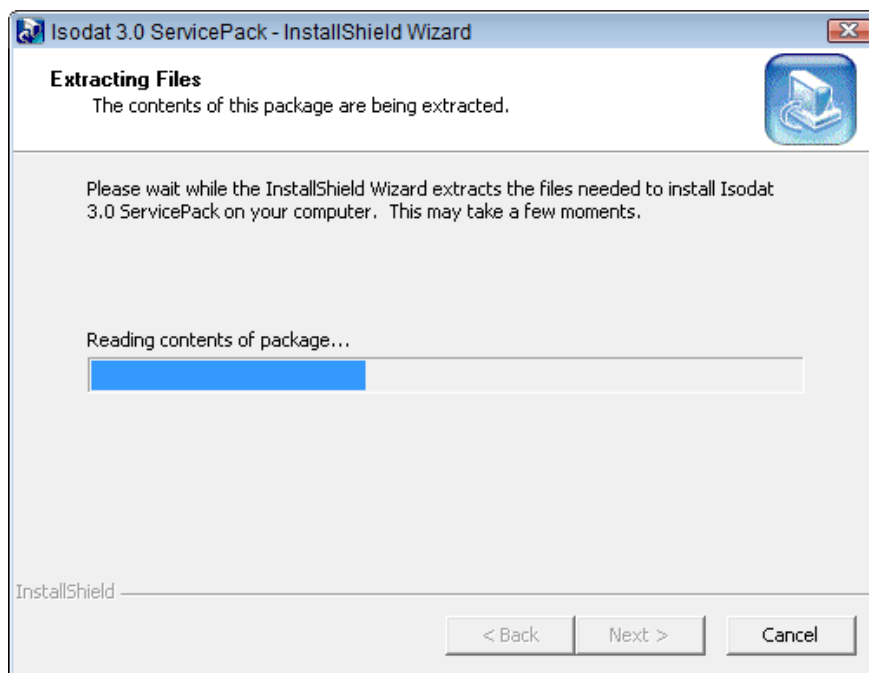


Figure 3-42. InstallShield Wizard reading contents

The files are extracted, see [Figure 3-43](#).

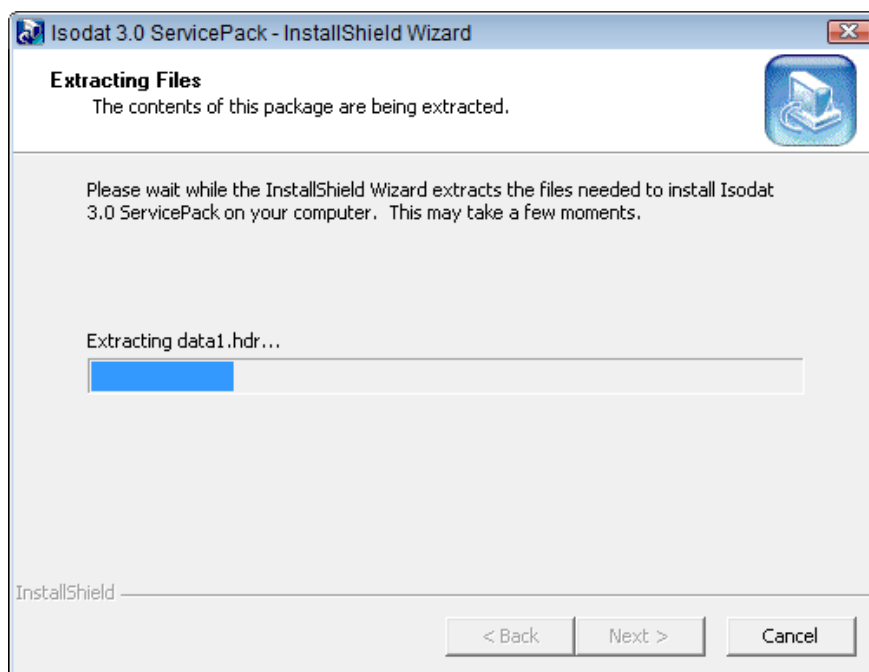


Figure 3-43. InstallShield Wizard extracting files

5. Wait while the Isodat Service Pack setup is preparing the InstallShield Wizard.

- When the **Installation under Windows 7** dialog opens, select **Proceed with installation**, see [Figure 3-44](#).

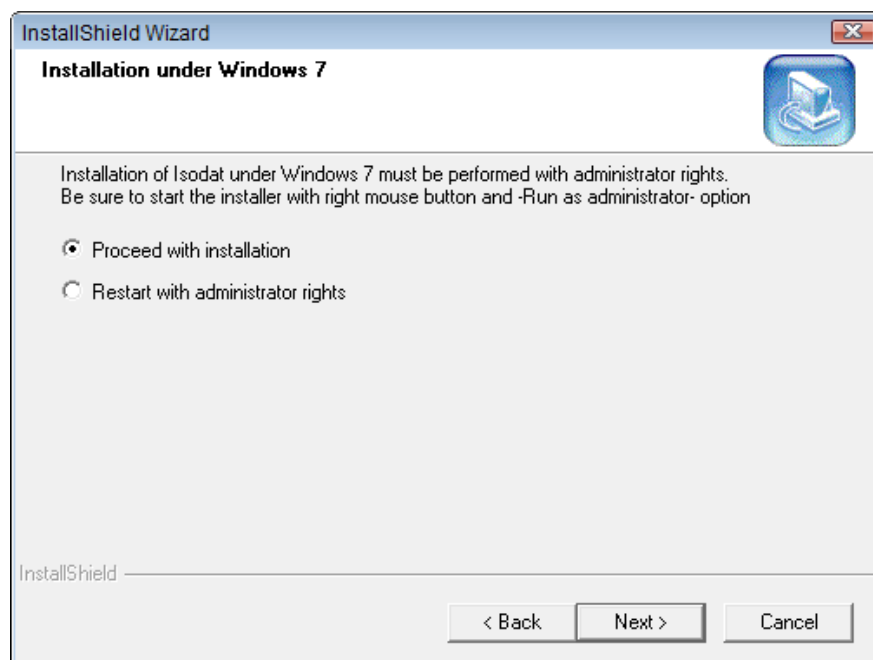


Figure 3-44. Proceed with installation

NOTICE If the setup was started without administrator rights, select **Restart with administrator rights** and click **Next** to stop the installation. Start again with administrator rights. ▲

7. Click **Next**.
The Isodat and Foundation dialog opens, see [Figure 3-45](#).

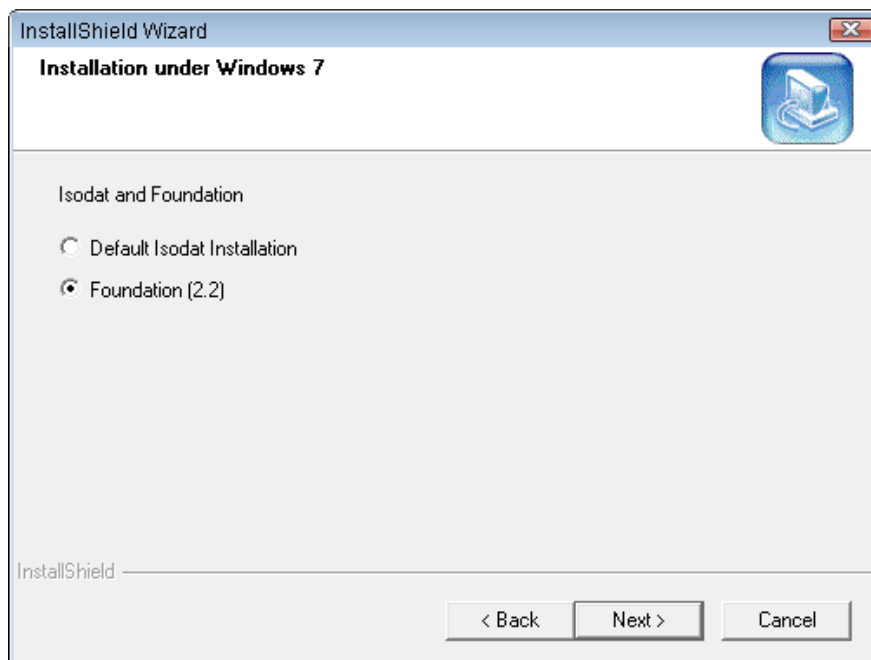


Figure 3-45. Selecting Foundation 2.2

NOTICE If the setup finds Foundation 2.1 files on the controlling system, an additional Foundation 2.1 button is shown and initially selected. Keep this selection to leave the Foundation 2.1 installation unchanged. Select Foundation 2.2 for migration to Foundation 2.2 and follow the instruction. Once migrated to Foundation 2.2, the Foundation 2.1 can not be re-installed by this service pack. When TriPlus and Trace Ultra were already in use before Installation of Isodat Service Pack 3.0.0.88 and the Foundation GC driver should be installed for the first time, be aware that all TriPlus and Trace Ultra methods could not be used and read any more once the Foundation GC drivers are installed. ▲

8. Select **Foundation 2.2**.

9. Click **Next**.
The InstallShield Wizard welcome dialog opens, see [Figure 3-46](#).

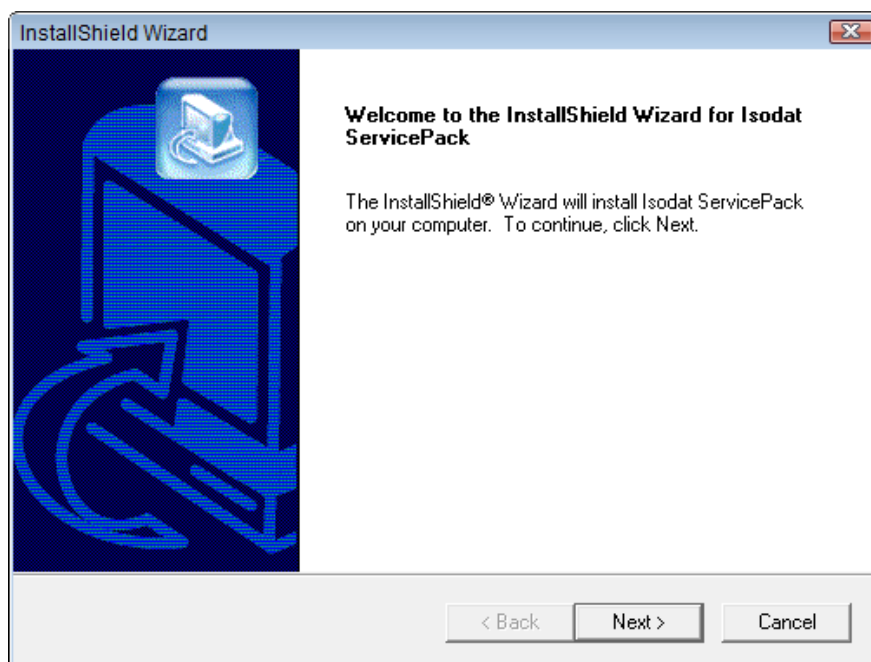


Figure 3-46. Welcome Service Pack InstallShield Wizard

10. Click **Next**.
Wait while the InstallShield Wizard checks the current installation. The **Setup Status** window showing 100%, stays in the background, see [Figure 3-47](#).

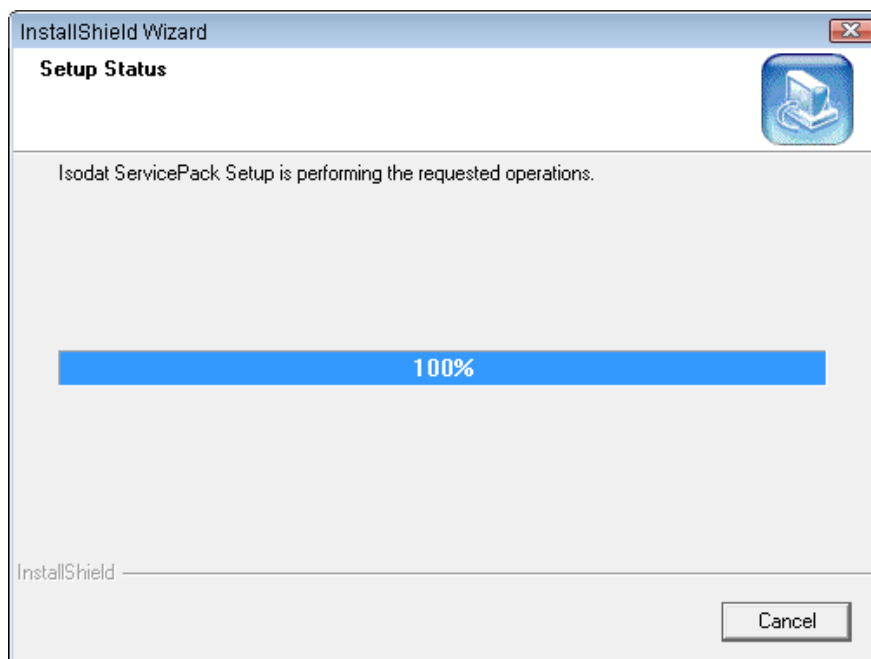


Figure 3-47. Setup Status of InstallShield Wizard for Isodat Service Pack

The Foundation 2.2 Devices dialog opens, see [Figure 3-48](#).

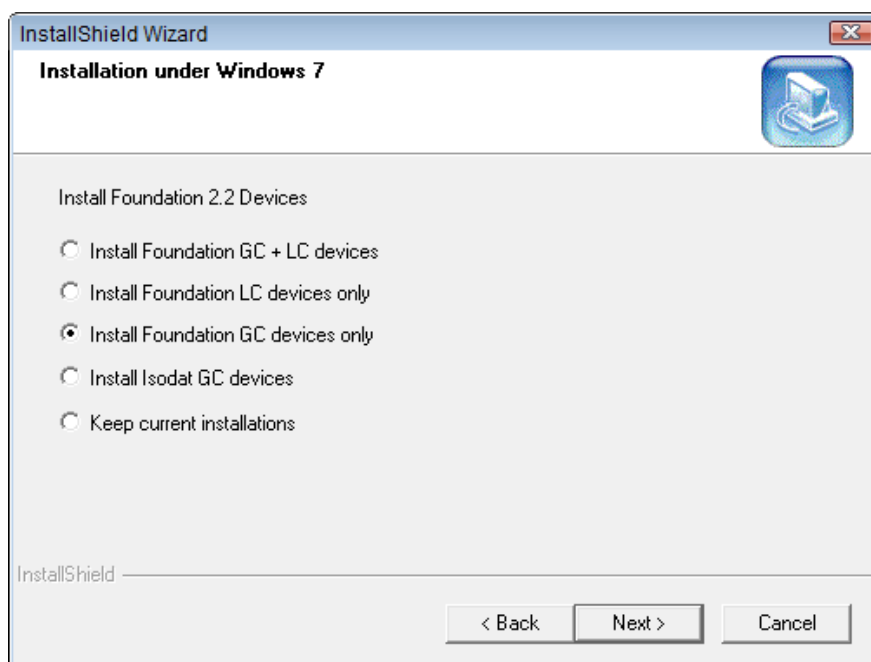


Figure 3-48. Selecting Install Foundation GC devices only

11. Select **Install Foundation GC devices only**.

NOTICE For the installation of Foundation LC devices see Xcalibur manuals. It is also described in the *LC IsoLink Operating Manual (P/N 1156140)*. ▲

NOTICE The Trace OCX drivers of **Isodat GC devices** and Foundation 2.2 drivers (see in [Table 3-1](#)) are incompatible and must not be installed at the same time.

The Isodat Service Pack 3.0.0.88 installer handles all necessary actions in this case. It is strictly recommended to use the Isodat Service Pack installer to install any Foundation-based device drivers. Do not install these drivers manually. ▲

12. Click **Next**.
The **Thermo GC Devices 2.2.0 Setup** dialog opens, see [Figure 3-49](#).

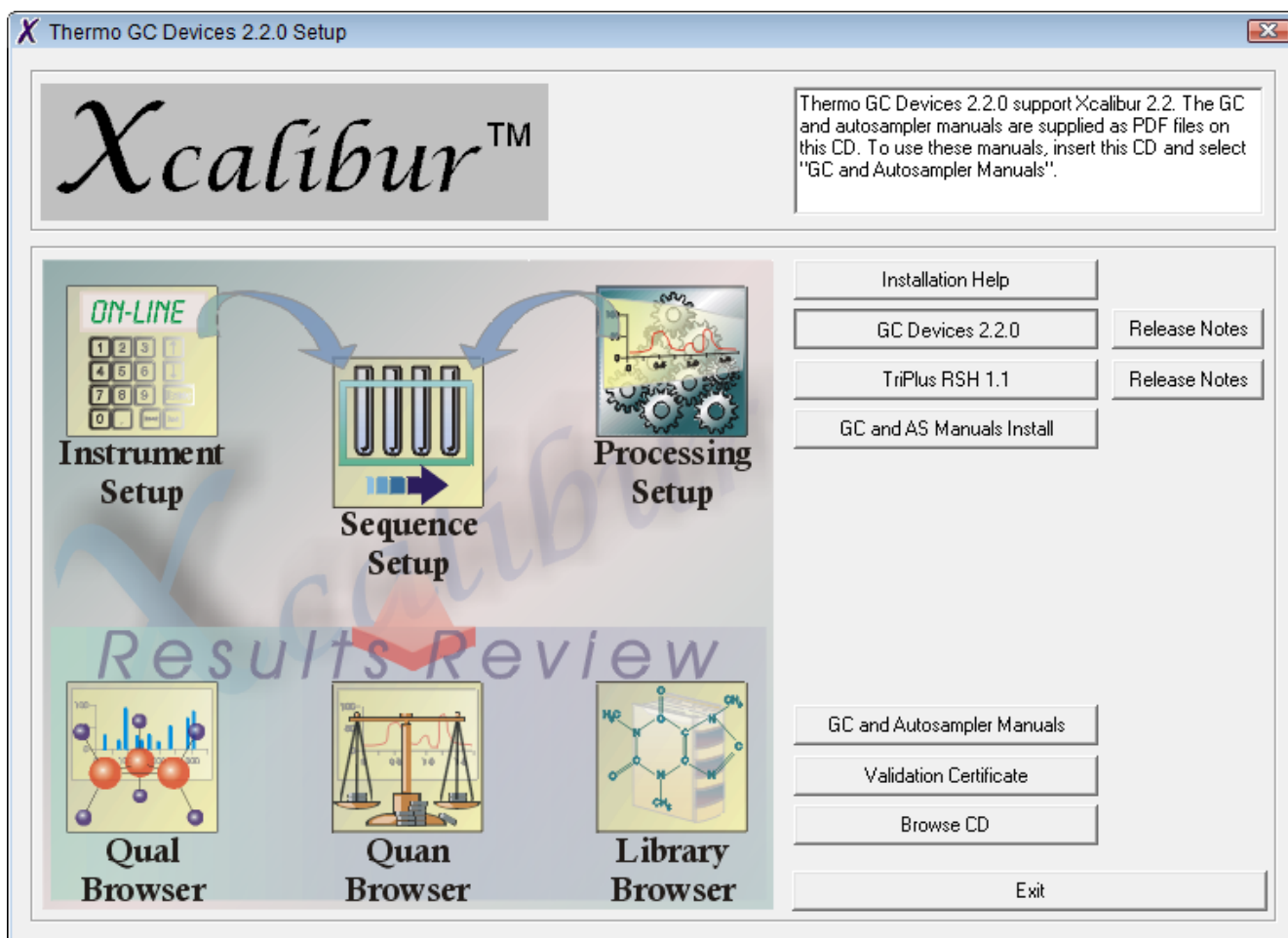


Figure 3-49. Thermo GC Devices 2.2.0 Setup dialog

13. Click **GC Devices 2.2.0**.

Thermo Foundation
InstallShield Wizard



The Welcome dialog of the InstallShield Wizard for Thermo GC Devices 2.2 opens, see [Figure 3-50](#).

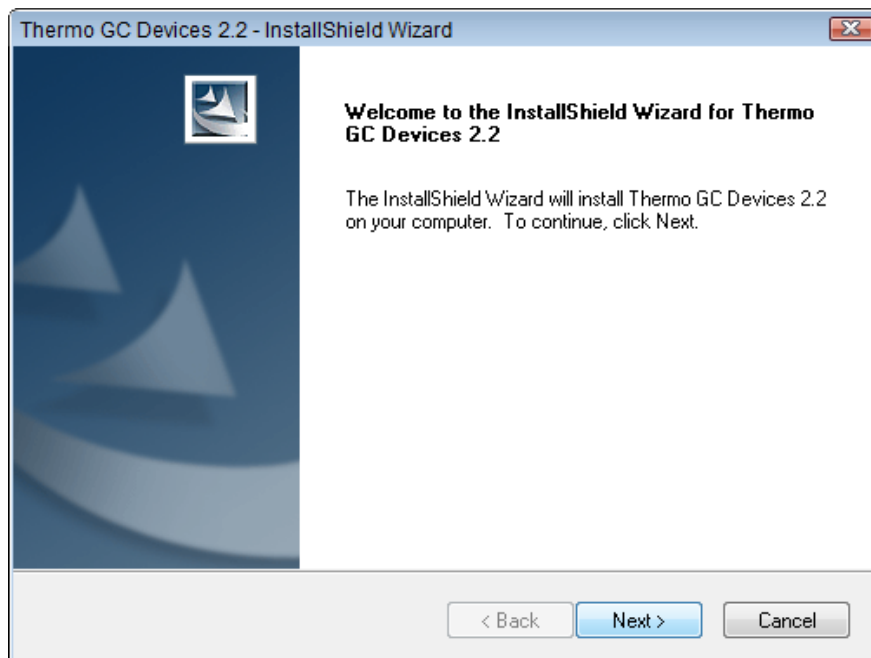


Figure 3-50. Welcome to InstallShield Wizard for Thermo GC Devices

14. Click **Next**.

The **License Agreement** dialog opens, see [Figure 3-51](#).

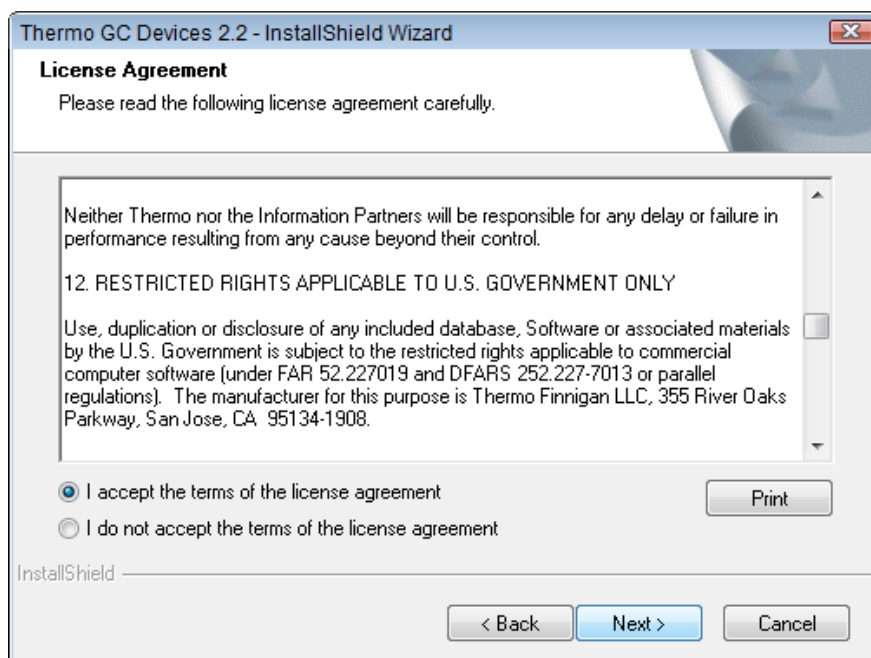


Figure 3-51. License Agreement for Thermo GC Devices

15. Read the license agreement carefully.

16. Select **I accept the terms of the license agreement**.
17. Click **Next**.
The **Select Features** dialog opens, see [Figure 3-52](#).

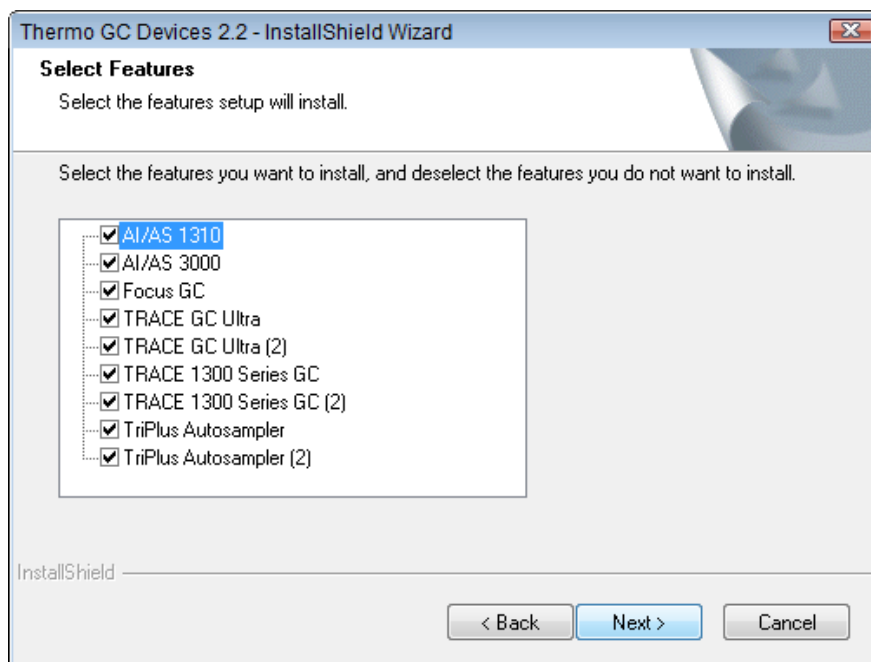


Figure 3-52. Selecting features for Thermo GC Devices

18. Deselect the check boxes for **Focus GC**, **TRACE GC Ultra (2)**, **TRACE 1300 Series GC (2)**, and **TriPlus Autosampler (2)**, see [Figure 3-53](#).

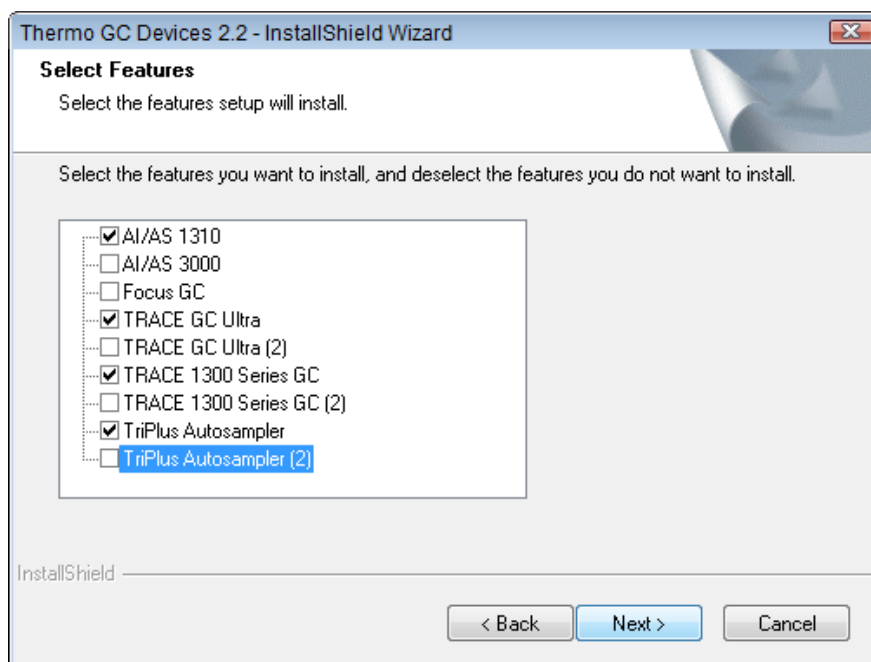


Figure 3-53. Deselecting features for Thermo GC Devices

19. Click **Next**.

The **Ready to install the Program** dialog opens, see [Figure 3-54](#).

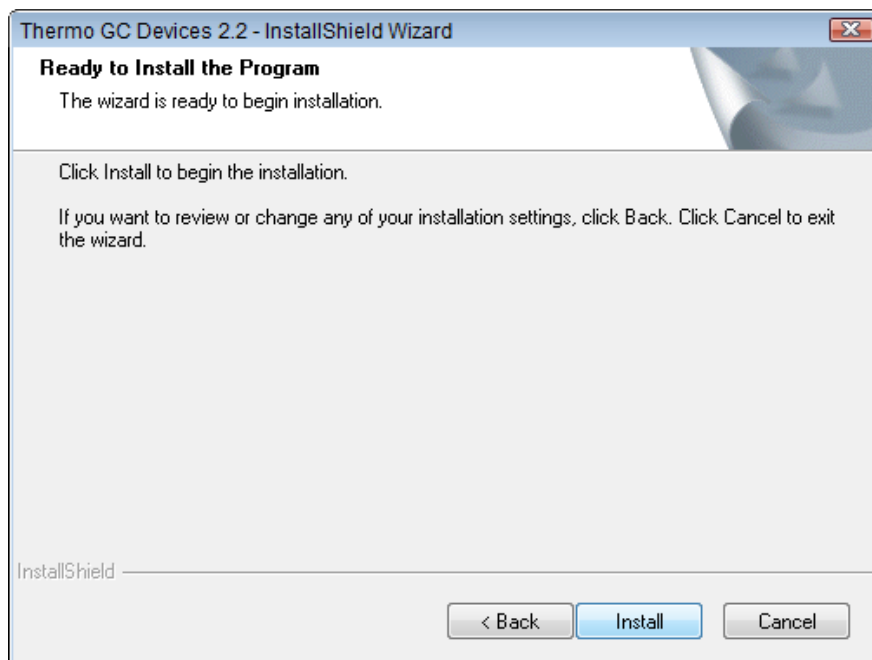


Figure 3-54. Ready to install dialog for Thermo GC Devices

20. Click **Install**.

21. Wait while the program is installing Thermo GC Devices, see [Figure 3-55](#).

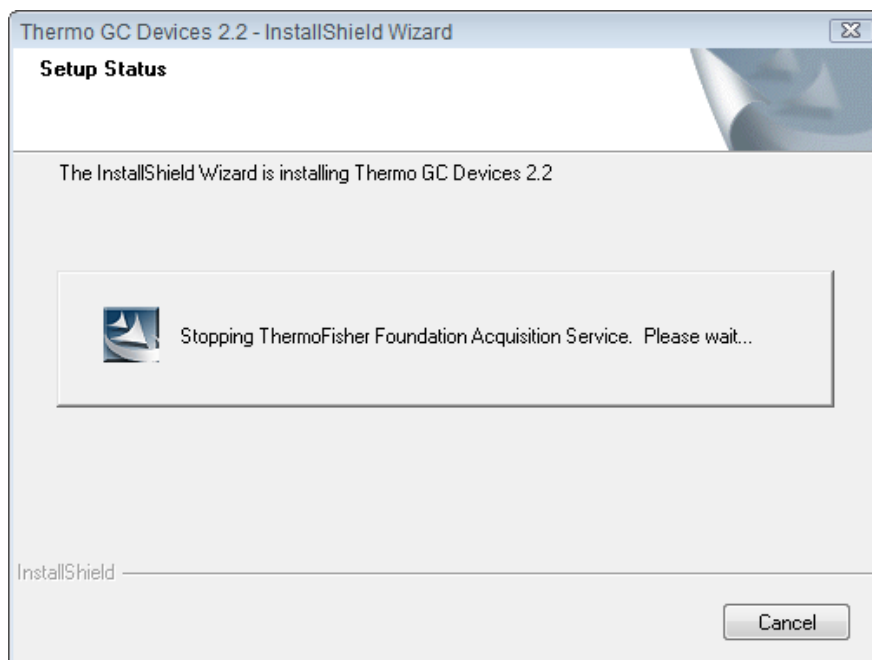


Figure 3-55. Installing Thermo GC Devices

22. The **InstallShield Wizard Complete** dialog opens, see [Figure 3-56](#).

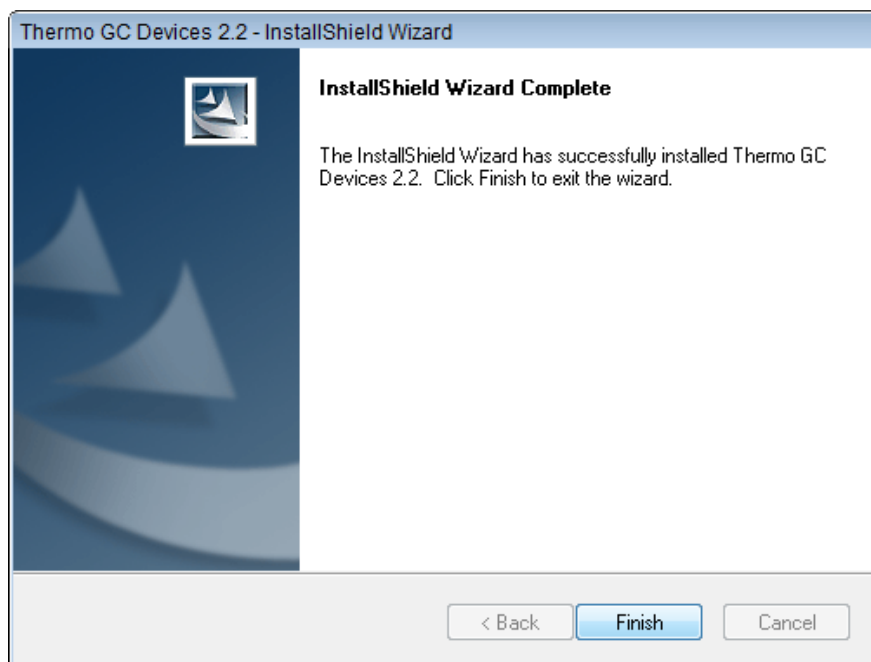


Figure 3-56. InstallShield Wizard Complete Thermo GC Devices

23. Click **Finish**.

24. Wait while the file verification is running, see [Figure 3-57](#).

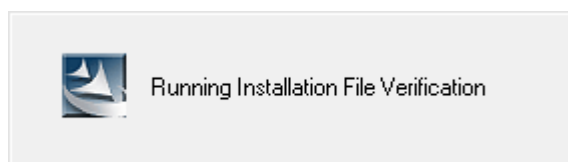


Figure 3-57. Running Installation File Verification

25. The **Installation Qualification** dialog opens, see [Figure 3-58](#).

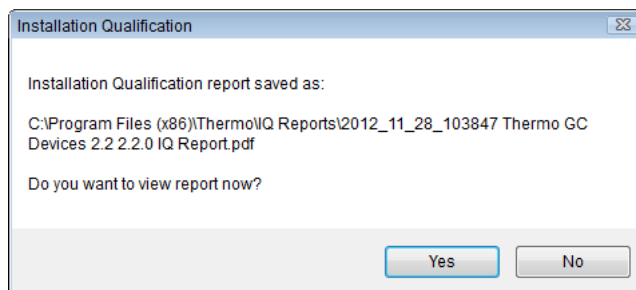


Figure 3-58. Installation Qualification dialog

With **Yes** an installation report can be viewed.

26. Click **No** to proceed.

27. The **Thermo GC Devices 2.2.0 Setup** dialog opens again, see [Figure 3-59](#).

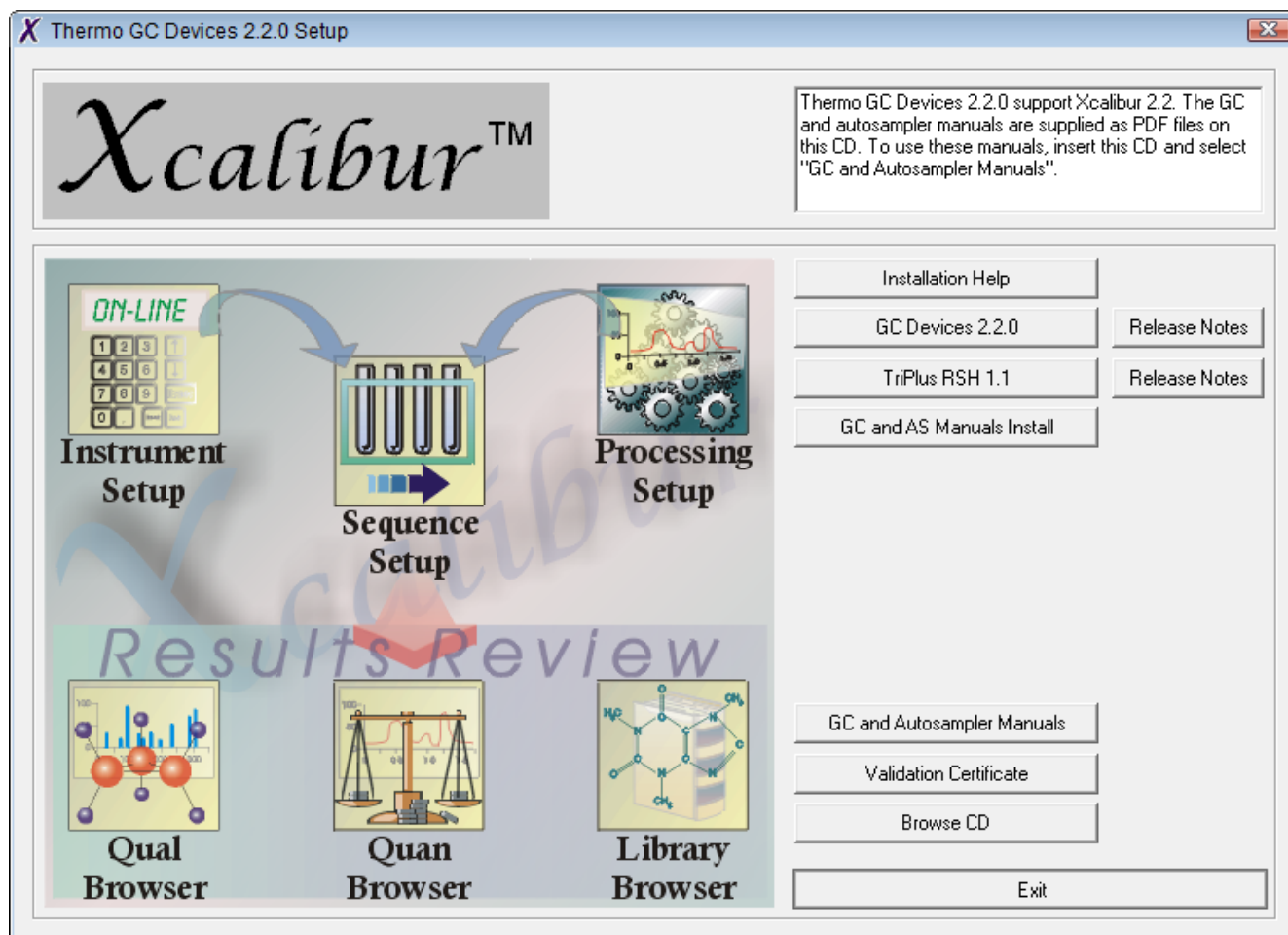


Figure 3-59. Thermo GC Devices 2.2.0 Setup dialog after installation

28. Click **Exit**.
The **Thermo GC Devices 2.2.0 Setup** dialog closes.

Isodat
InstallShield
Wizard



The **InstallShield Wizard Complete** dialog opens, see [Figure 3-60](#).

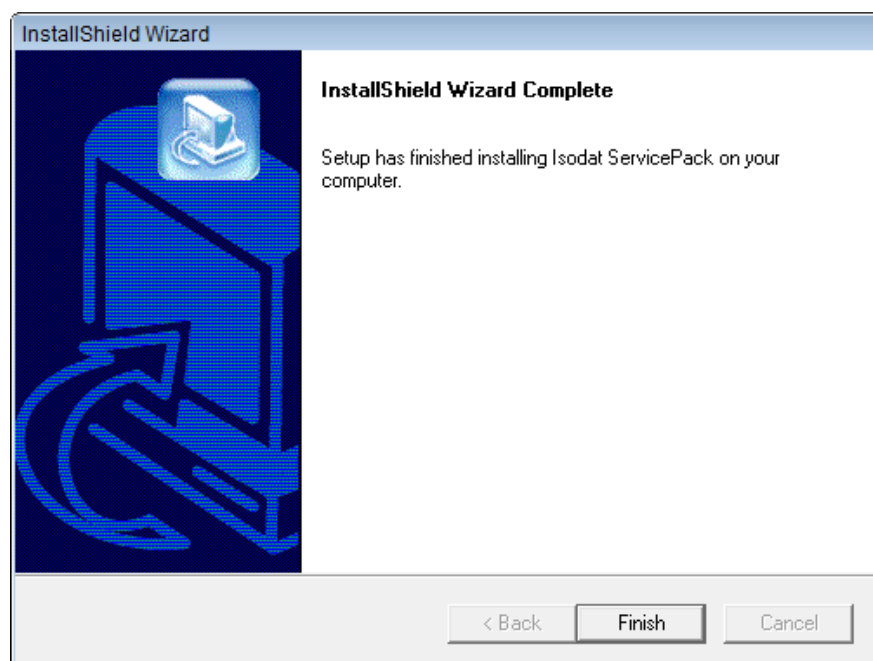


Figure 3-60. InstallShield wizard Complete dialog

29. Click **Finish**.

A warning message is shown, see [Figure 3-61](#).

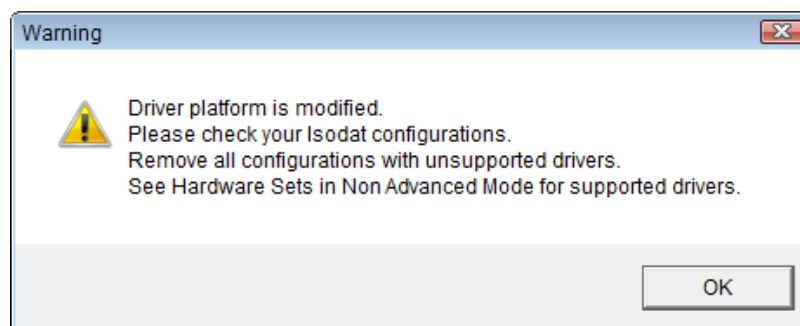


Figure 3-61. Driver platform modified message

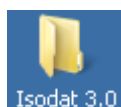
30. Click **OK**.

The installation of the Foundation GC devices is complete.

Assigning Administrator Rights to all Applications of Isodat

All applications of Isodat must be run with administrator rights. During the installation of Isodat 3.0 or of the Isodat Service Pack under Windows 7 operating system you are reminded to assign administrator rights to all applications of Isodat.

❖ To assign administrator rights to all applications of Isodat



1. On your desktop, double-click the **Isodat 3.0** icon to open the Isodat 3.0 folder in your file browser.
2. Right-click, for example, the **Acquisition** icon.
3. Select **Properties** from the context menu, see [Figure 3-62](#).

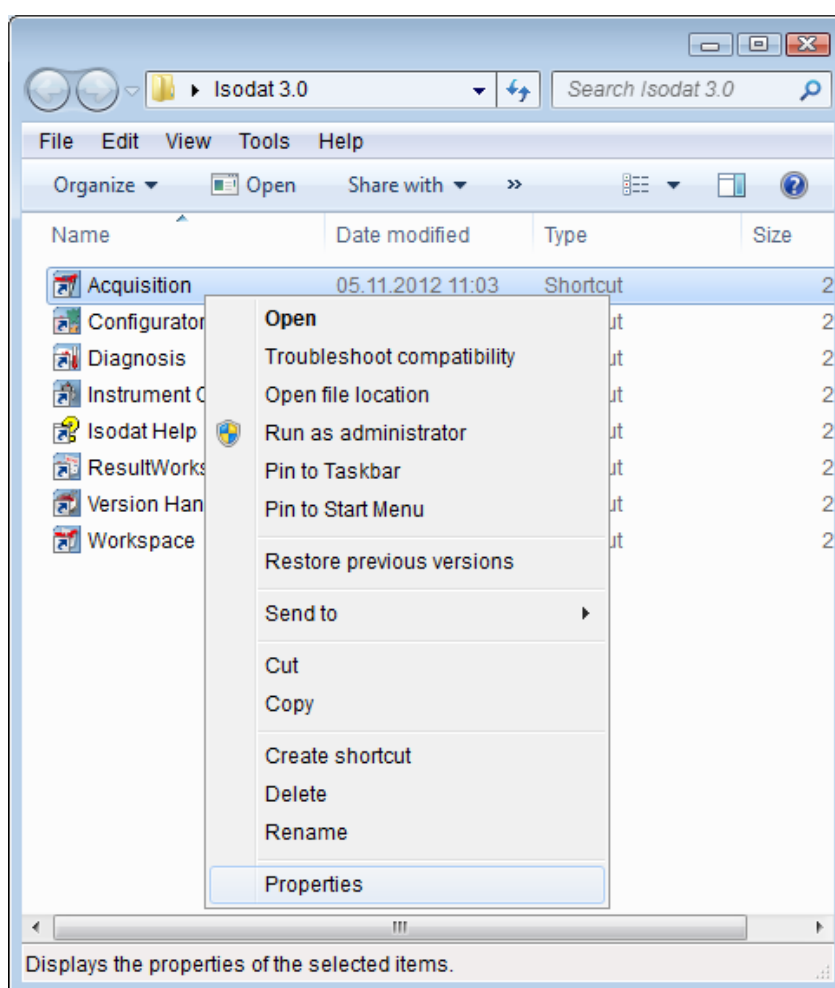


Figure 3-62. Properties of the Isodat application Acquisition

Installation of Isodat

Assigning Administrator Rights to all Applications of Isodat

4. Click the tab **Compatibility**, see [Figure 3-63](#)

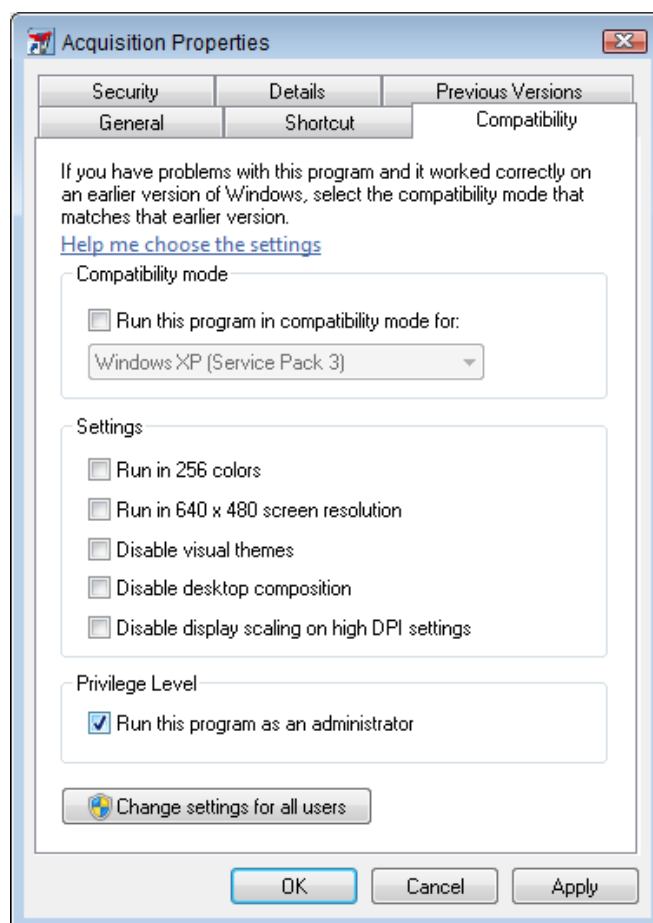


Figure 3-63. Selecting Privilege level for Isodat application

5. At the bottom of the page for **Privilege Level**, select the check box **Run this program as an administrator**.
6. Click **Apply** and then **OK**.
7. Repeat for all applications in your Isodat 3.0 folder.

Thermo Fisher Scientific Inc.

81 Wyman Street

P.O. Box 9046

Waltham, Massachusetts 02454-9046

United States

www.thermoscientific.com