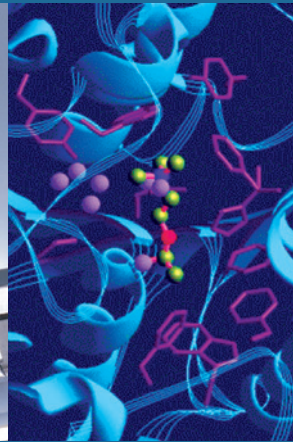
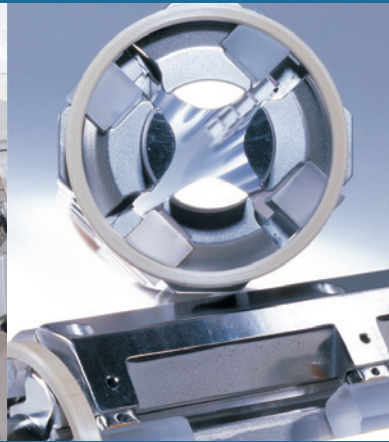


Thermo Fisher Scientific
CTC HTC PAL in LC IsoLink™
Installation Information

Revision C - 118 6490



© 2008 Thermo Fisher Scientific Inc. All rights reserved.

All trademarks are the property of Thermo Fisher Scientific Inc. and its subsidiaries.

Thermo Fisher Scientific Inc. provides this document to its customers with a product purchase to use in the product operation. This document is copyright protected and any reproduction of the whole or any part of this document is strictly prohibited, except with the written authorization of Thermo Fisher Scientific Inc.

The content of this document are subject to change without notice. All technical information in this document is for reference purposes only. System configurations and specifications in this document supersede all previous information received by the purchaser.

Thermo Fisher Scientific Inc. makes no representations that this document is complete, accurate or error-free and assumes no responsibility and will not be liable for any errors, omissions, damage or loss that might result from any use of this document, even if the information in the document is followed properly.

This document is not part of any sales contract between Thermo Fisher Scientific Inc. and a purchaser. This document shall in no way govern or modify any Terms and Conditions of Sale, which Terms and Conditions of Sale shall govern all conflicting information between the two documents.

Printing History: Revision C printed in April 2008.

CTC HTC PAL in LC IsoLink™ - Installation Information

This installation information for a CTC HTC PAL in LC IsoLink™ contains the following sections:

- “General Remark” on page 1-2
- “Installation” on page 1-2
- “Information for Sequence Editing” on page 1-6
- “Appendix” on page 1-6

General Remark

Caution The injection valve must be configured different from fig. 26 on page 43 in the CTC HTC PAL autosampler manual! Instead, configure the injection valve as depicted in Figure 1-1. ▲

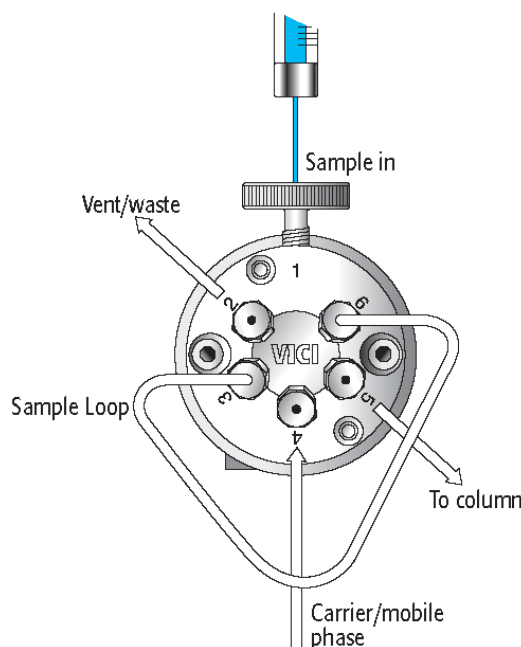


Figure 1-1. Proper configuration of injection valve

Installation

Use the 9 pin cable (included in delivery) to connect the PAL autosampler on position SER1 to a PC serial port.

If a Surveyor MS Pump is Available

If no free COM port is available, insert the provided COM port card into your computer and install the respective drivers.

Use the interface connector cable (included in delivery) to connect the PAL autosampler on position Interface to the Surveyor MS pump.

Note Take note of the labels at the interface connector cable when connecting the plug to autosampler and Surveyor MS pump. ▲

Install the PAL driver for the Xcalibur data system. Refer to [“Appendix”](#) on [page 1-6](#).

Use the Configurator of Isodat 2.0 to create a new LC IsoLink configuration containing the HTC PAL autosampler and/or the Surveyor MS pump.

Furthermore in the Configurator, check whether HTC PAL autosampler and Surveyor MS pump have been properly configured (e.g. COM port settings). Click on the button **Get Configuration from PAL**.

Adjust the CTC output signals (out signals) via the PAL keypad terminal. This depends on the selected Isodat configuration (e.g. LC IsoLink + Surveyor MS Pump + CTC HTC PAL Autosampler). Refer to [“Adjusting Output Signal of CTC HTC PAL Autosampler”](#) on page 1-3.

Adjusting Output Signal of CTC HTC PAL Autosampler

Check destination and pulse time of your CTC HTC PAL autosampler as shown in Figure 1-2:

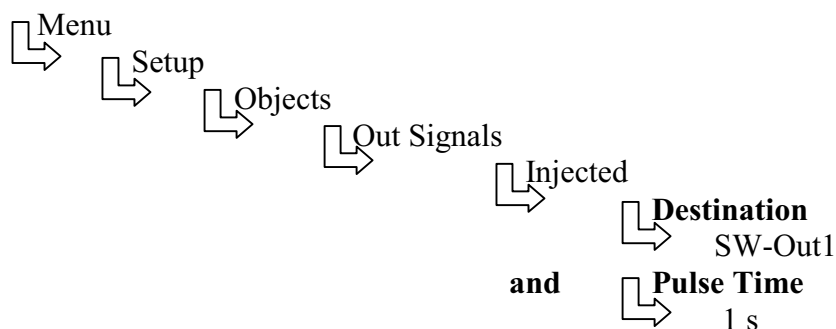


Figure 1-2. Checking destination and pulse time

1. In case of an Isodat configuration with **CTC HTC PAL and Surveyor MS Pump**, additionally check SW-out as displayed in Figure 1-3:

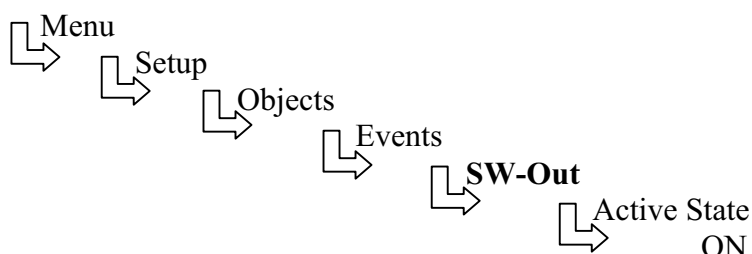


Figure 1-3. Checking SW-out - Case 1

2. In case of an Isodat configuration with **Surveyor MS Pump only**, additionally check SW-out as displayed in Figure 1-4:

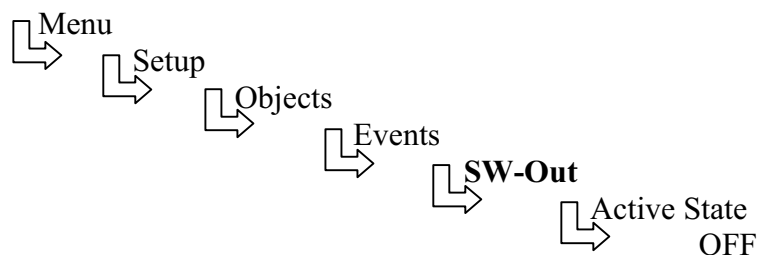


Figure 1-4. Checking SW-out - Case 2

If no Surveyor MS Pump is Available

If no Gameport card is available, insert it into your computer as well.

Use the interface connector cable (included in delivery) to connect the PAL autosampler on position Interface to the Gameport card in your computer.

Note Take note of the labels at the interface connector cable when connecting the plug to autosampler and Gameport SUB-D plug. ▲

Install the PAL driver 1.5.6 for the Xcalibur data system. Refer to “Appendix” on page 1-6.

Adjust the CTC output signals (out signals) via the PAL keypad terminal.

Check destination, pulse time and SW-out signal (for Isodat configuration 1, CTC HTC PAL and Surveyor MS Pump) as described in “Adjusting Output Signal of CTC HTC PAL Autosampler” on page 1-3.

Use the Configurator of Isodat 2.0 to create a new LC IsoLink configuration containing the HTC PAL autosampler without pump.

Furthermore in the Configurator, check whether HTC PAL autosampler and Surveyor MS pump have been properly configured (e.g. COM port settings). Click on the button **Get Configuration from PAL**.

In the Isodat method, choose the **ISL Script** tab and then the **AS** tab. Then mark the **By Contact Closure** checkbox. See Figure 1-5. This enables the autosampler to start data acquisition via Isodat 2.0.

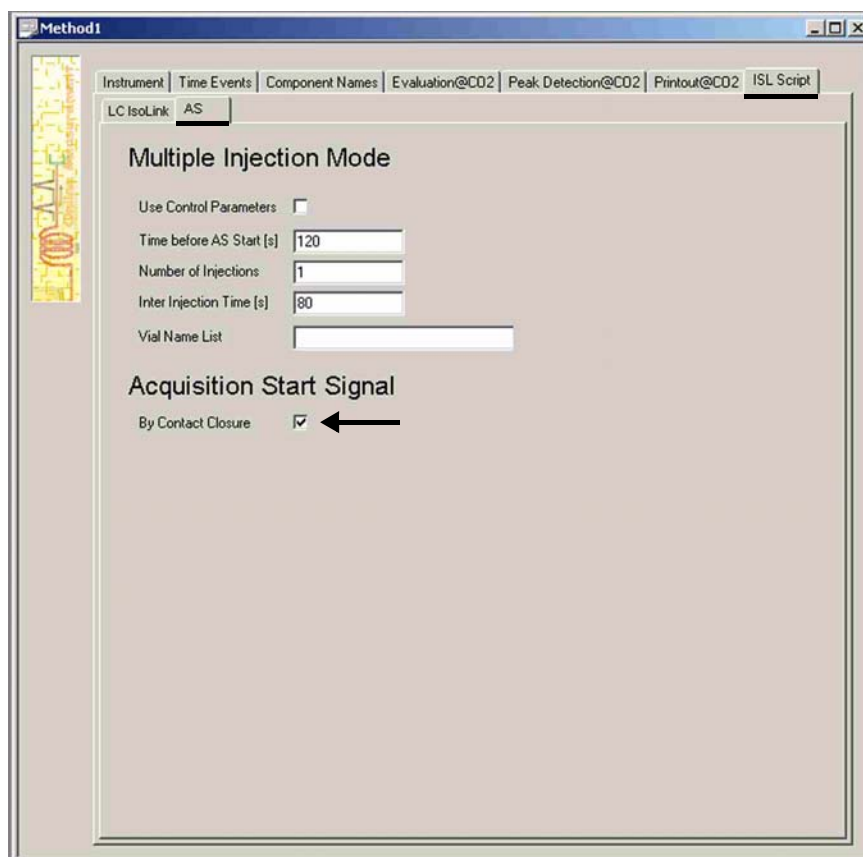


Figure 1-5. Marking By Contact Closure checkbox

If Additionally a Surveyor PDA Detector is Available

Xcalibur 1.4 SP1 must be installed. Refer to the *Xcalibur manual*.

Install the Surveyor detector. Follow the installation instructions in the corresponding manuals and the installation instructions of the detectors.

Use the interface connector cable (included in delivery) to connect the PAL autosampler on position Interface to the Surveyor PDA detector.

Note Take note of the labels at the interface connector cable when connecting the plug to your detector. ▲

Data acquisition of the Surveyor PDA detector is only possible using Xcalibur. Select an Xcalibur configuration containing the HTC PAL and the required detector. Follow the installation instructions of the Surveyor detector.

Information for Sequence Editing

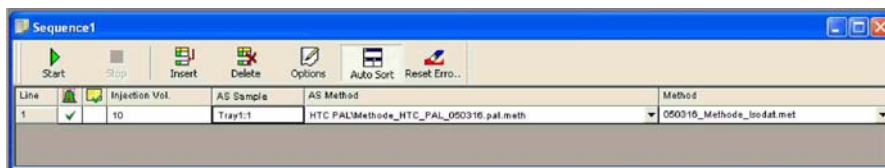


Figure 1-6. Editing a sequence containing a CTC HTC PAL autosampler

In order to edit a sequence containing a CTC HTC PAL autosampler, type the injection volume (in μL) into the Injection Vol. column. Specify the kind of tray (usually Tray1) and the sample position within this autosampler at the AS Sample column.

Always use the following format: tray:position. Example: in Figure 1-6, Tray1:1 means that the sample to be injected is placed in Tray1 on position 1.

Then select the previously defined method to be used

- for the autosampler (AS Method column)
- for the Surveyor MS pump (if it is part of the actual configuration; LC Method column) and
- for the IRMS (Method column)

Appendix

This appendix contains information about

- [“Software Requirements”](#) and
- [“Installation”](#)

Software Requirements

Isodat 2.0 with Xcalibur support or Xcalibur software 1.4 SP 1

Installation

In order to establish communication between Isodat 2.0 and the HTC PAL, Xcalibur or Isodat with Xcalibur support must be installed on your computer.

Insert the installation CD of the Xcalibur PAL driver 1.5.6 software (included in delivery) into your CD drive. The software installation wizard starts automatically. If it does not, select \Setup at your CD directory.

Follow the installation dialog. Restart your computer after the installation was successful.

Thermo Fisher Scientific Inc.

81 Wyman Street

P.O. Box 9046

Waltham, Massachusetts 02454-9046

United States

www.thermo.com