

ISODAT NT
Fiberline Driver
Installation Guide

Reparatur - Begleitkarte

Bitte vollständig ausfüllen

Repair-Covering Letter

Please fill in completely

Absender:
Despatcher:

Geräte-Type:
Instrument Type:

Service-Nr.:
Service-No.:

Sie erhalten zur Reparatur unter unserer Bestell-Nr.:

You receive for repair under our Order No.: _____

- DOA**
- Teil wurde nicht benutzt / part not used
- Teil wurde nur für Testzwecke verwendet / used for test purposes only
- Festgestellte Mängel oder deren Auswirkung:
Established Defect or its Effect:**

Bitte detaillierte Angaben machen / Please specify in Detail

Ein Austauschteil haben wir erhalten unter Kommissions-Nr.:

An Exchange Part already received with Commission No.:

Ja/Yes Nein/No

Die Anlage ist außer Funktion

The System is out of Function

Ja/Yes Nein/No

Durch die nachfolgende Unterschrift bestätige(n) ich/wir, daß die o.g. Teile frei von gesundheits-
schädlichen Stoffen sind, bzw. vor Ihrer Einsen-
dung an Thermo Finnigan MAT dekontaminiert,
wurden, falls die Teile mit giftigen Stoffen in
Verbindung gekommen sind.

By signing this Document I am/we are certifying
that the a.m. Parts are free from hazardous
materials. In case the parts have been used for
the analysis of hazardous substances I/we
attest that the parts have been decontaminated
before sending them to Thermo Finnigan MAT.

Datum / Date

Unterschrift / Signature

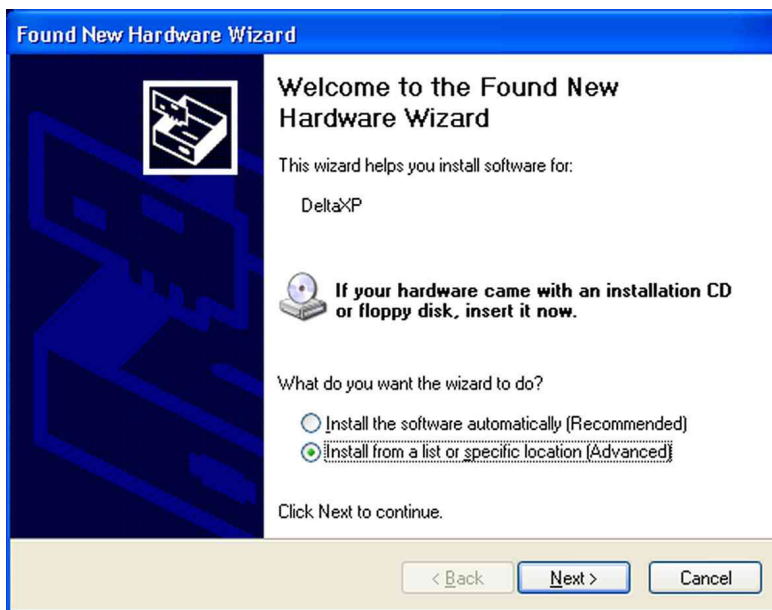
Table of Contents

1	Installation of Fiberline Interface Driver	1.1–1
1.1	Usual Installation Case	1.1–1
1.2	Wizard does not pop up automatically	1.2–6
1.3	Fiberline is not recognized at all	1.3–8
1.4	Fiberline is not recognized correctly	1.4–9

1 Installation of Fiberline Interface Driver

1.1 Usual Installation Case

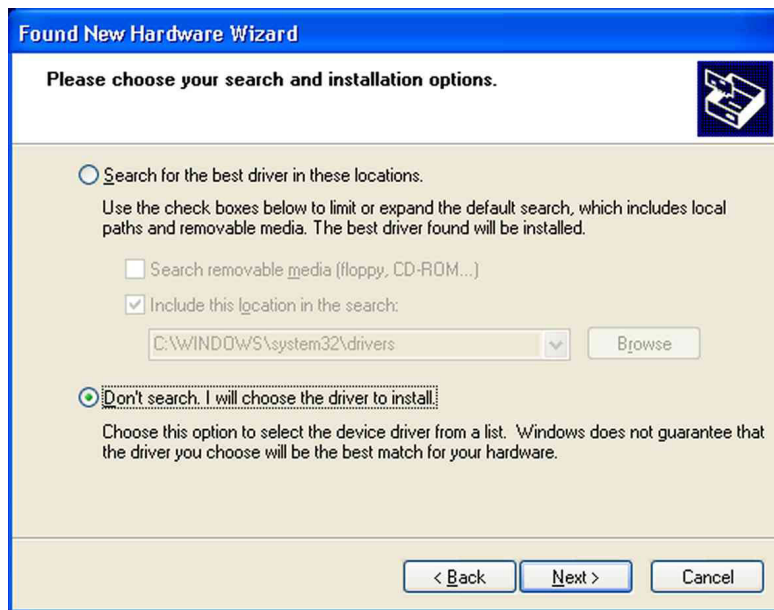
Principle: After installation of ISODAT NT, the driver that enables access to Thermo Finnigan's **Fiberline Interface** card must be installed as follows:



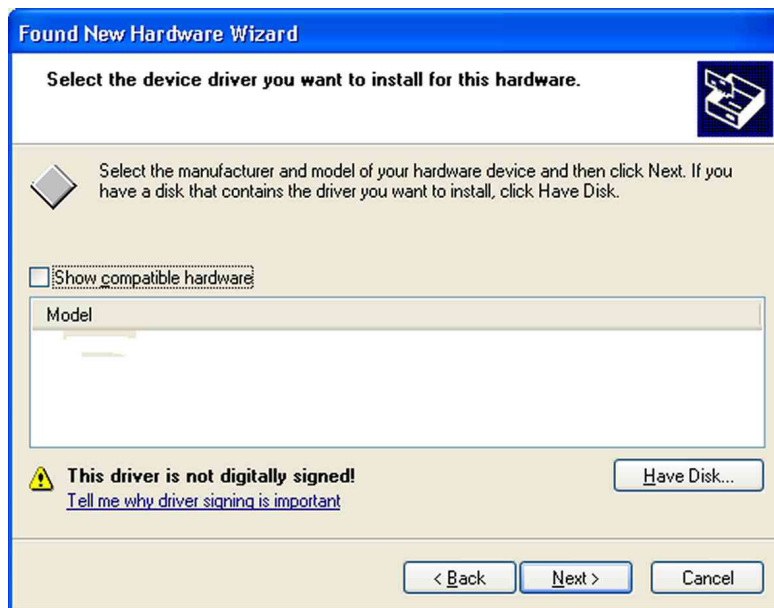
During reboot of your computer after installation of ISODAT NT, a wizard indicates that a new hardware has been found.

- Mark **Install from a list or specific location (Advanced)** and click **Next**.

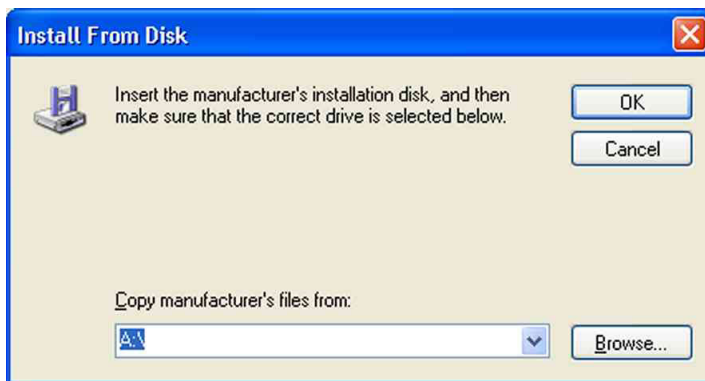
NOTE: *If the wizard does not appear, proceed with chapter 1.2, instead.*



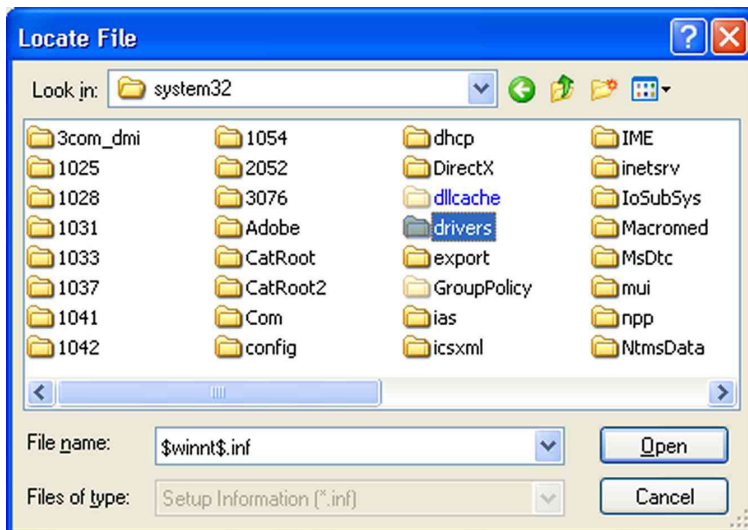
➤ Mark **Don't search...** and click **Next**.



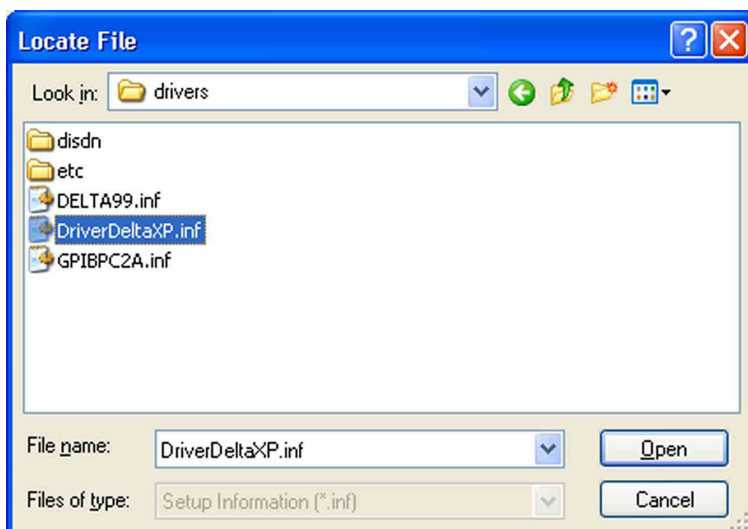
➤ Press **Have Disk**. Then click **Next**.



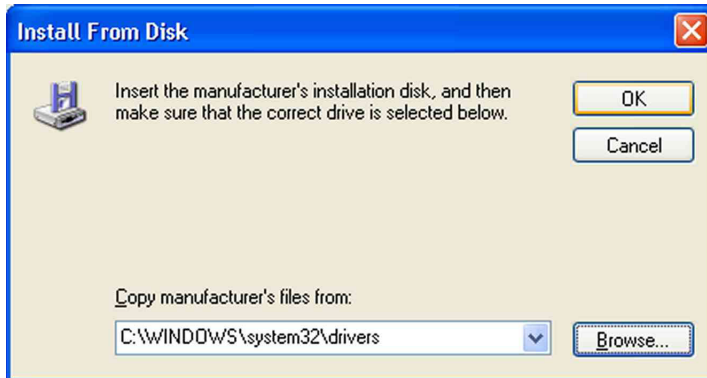
- Press **Browse**.



- Browse to the folder **C:\Windows\system32\drivers**.
- **Mark** it and press **Open**.



- Mark the file ***DriverDeltaXP.inf*** and press ***Open***.



The correct path of the driver file is now shown in the entry field.

- Confirm by ***OK***.



Thermo Finnigan's Fiberline MS Series is listed.

- ***Select*** it. Then press ***Next***.



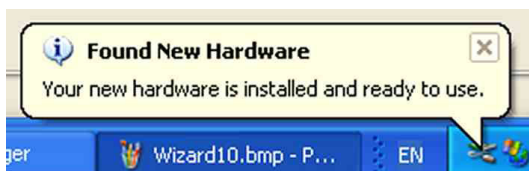
The driver is being installed.

- Wait and finally press **Next**.



The Fiberline driver has been installed.

- Click **Finish** to close the wizard.



The hardware driver just installed is indicated in the system tray down right.
It is not necessary to reboot your computer.

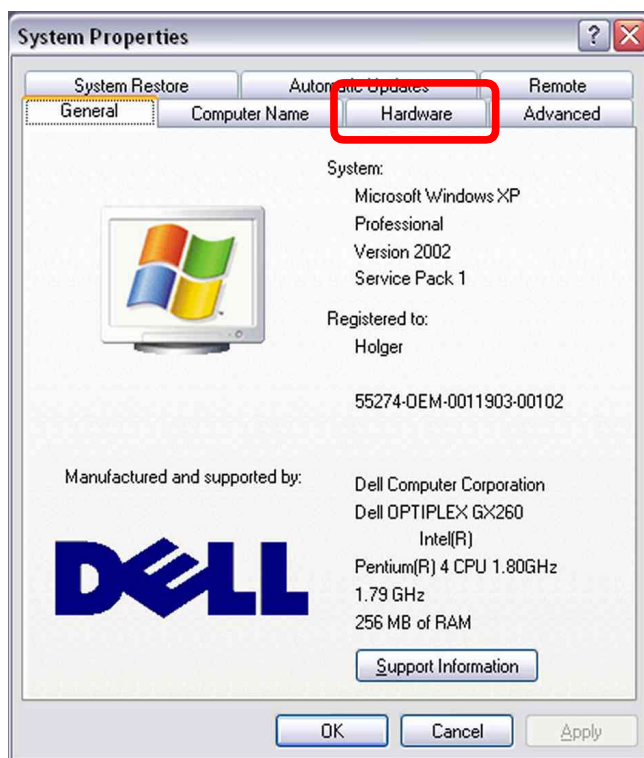
1.2 Wizard does not pop up automatically

Usually, the wizard pops up automatically during reboot of your system (see chapter 1.1). If not, proceed as follows:

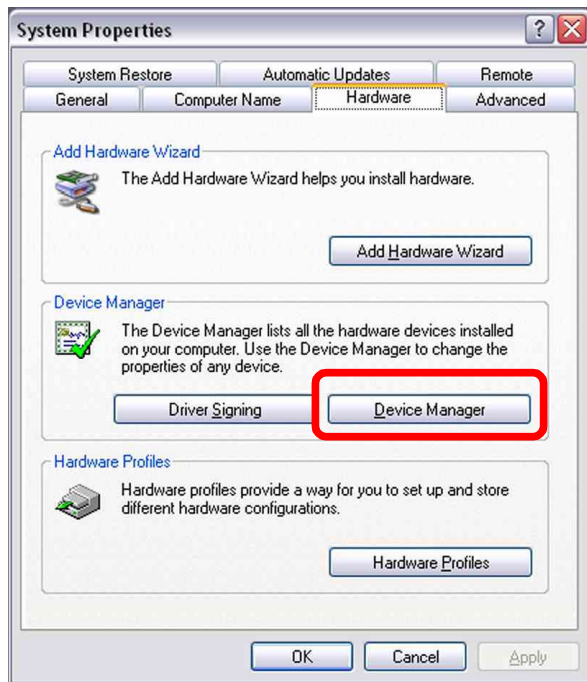
➤ **Right-click** on **My Computer**



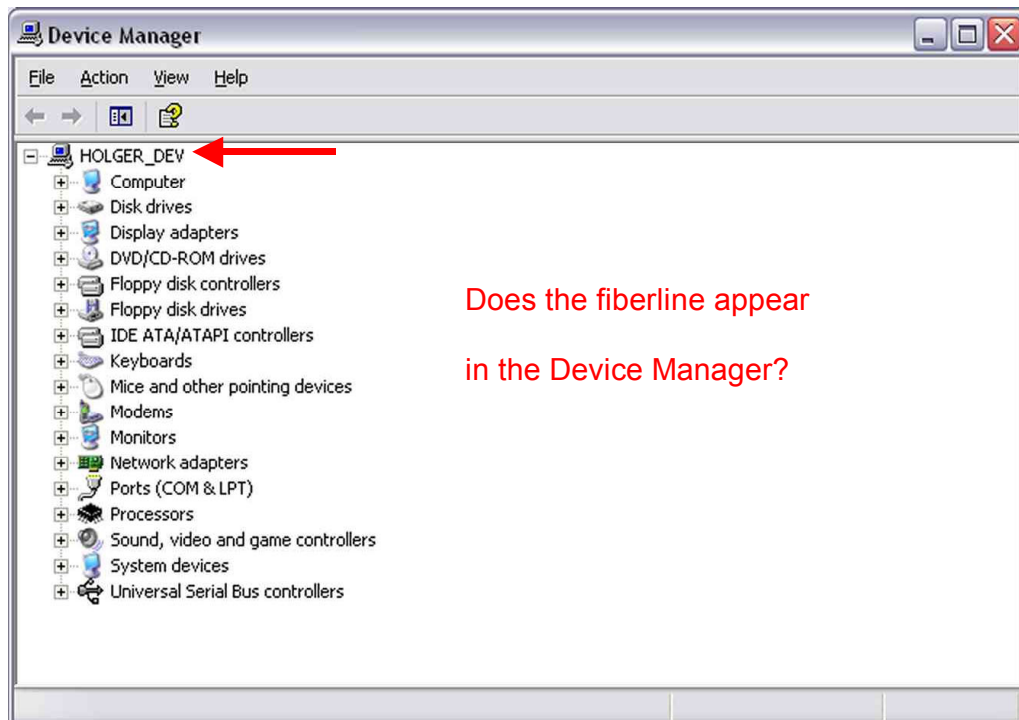
➤ Select **Properties**.



➤ Select the **Hardware** tab.



➤ Choose **Device Manager**.



The fiberline should be recognized as new hardware and be part of the list (marked by a question mark).

But, if the fiberline does **not** appear in the **Device Manager** (i.e. no entry, no question mark), it has not been recognized. In this case, proceed as follows:

1.3 Fiberline is not recognized at all



- **Mark** the first entry in the list, i.e. the *name of the computer*.
- **Right-click** on it.
- Click on **Scan for hardware changes**.

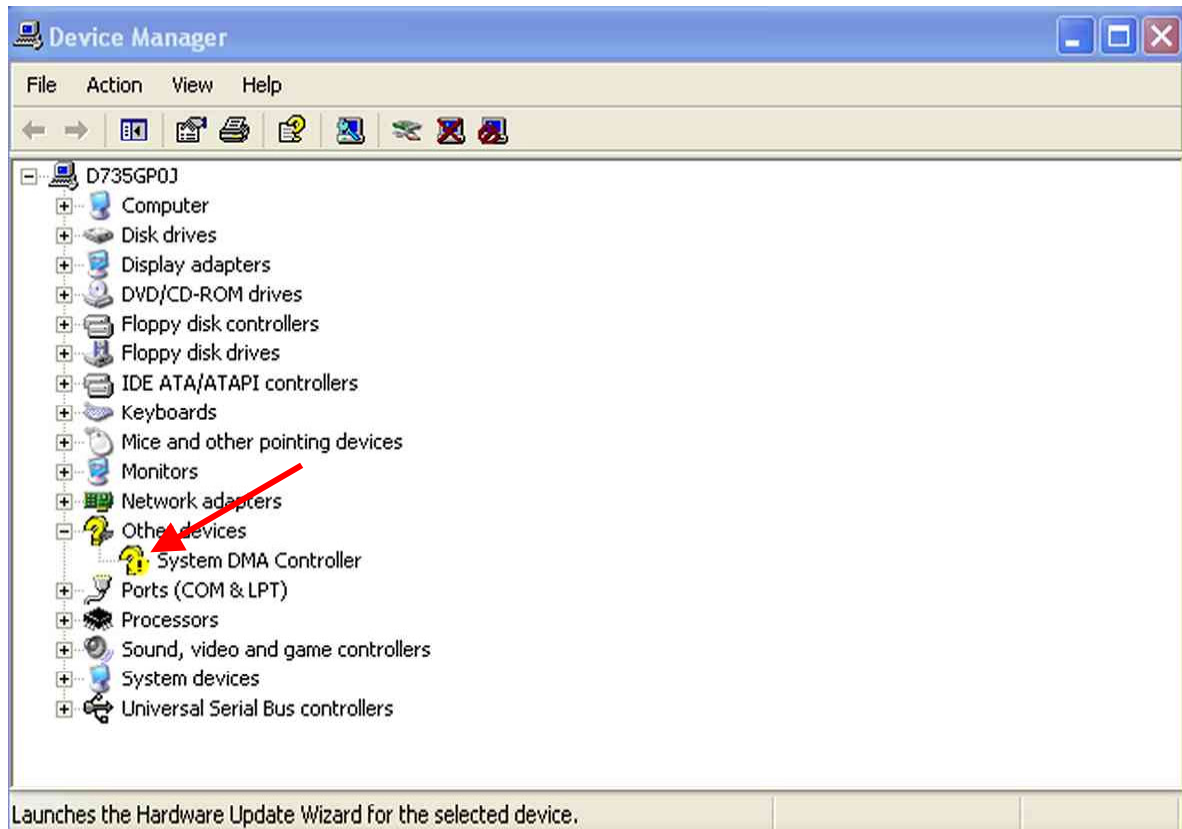
Alternative: Click on the **Scan for new hardware** icon



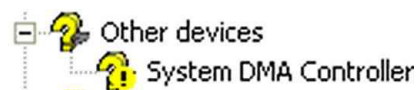
The wizard appears.

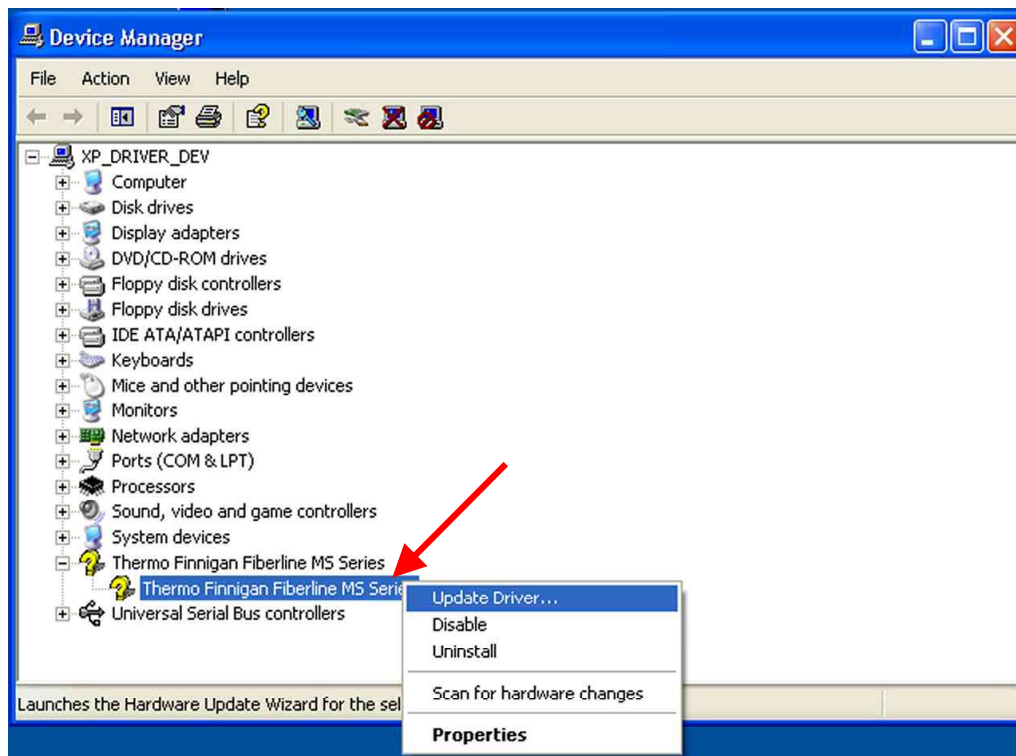
- Proceed as is described in chapter 1.1, i.e. usual installation case.

1.4 Fiberline is not recognized correctly



If the fiberline has not been recognized correctly, but as **defective or not installed** hardware, the question mark is accompanied by a yellow exclamation mark:

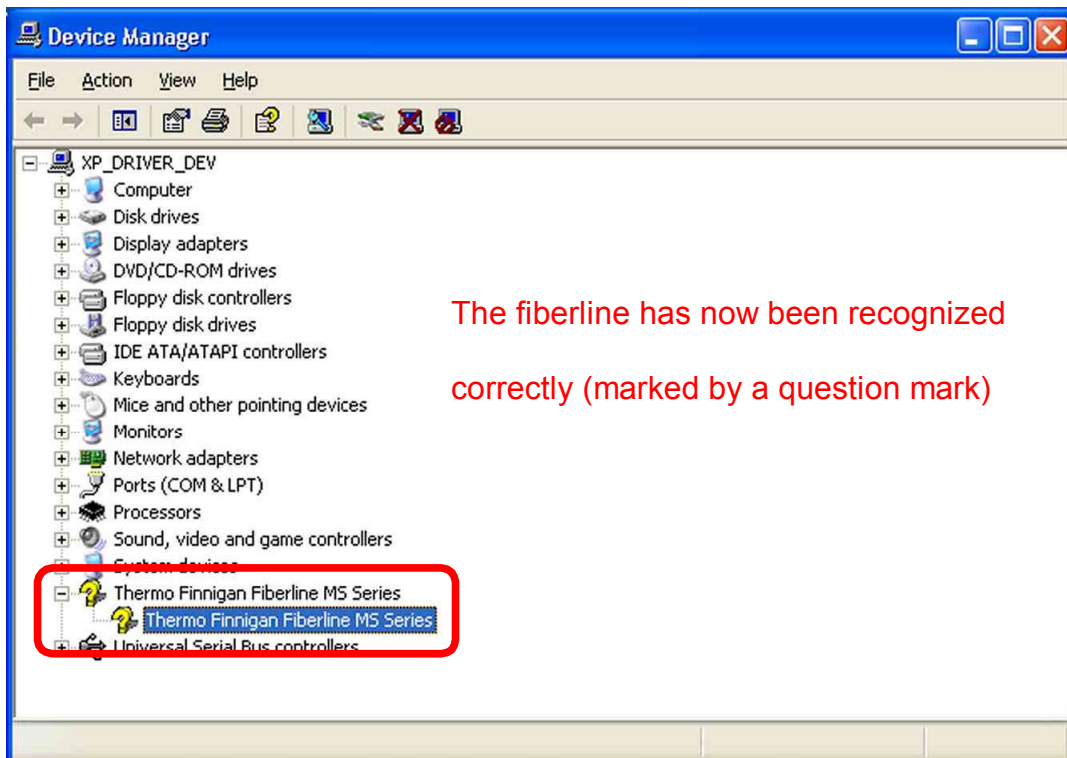




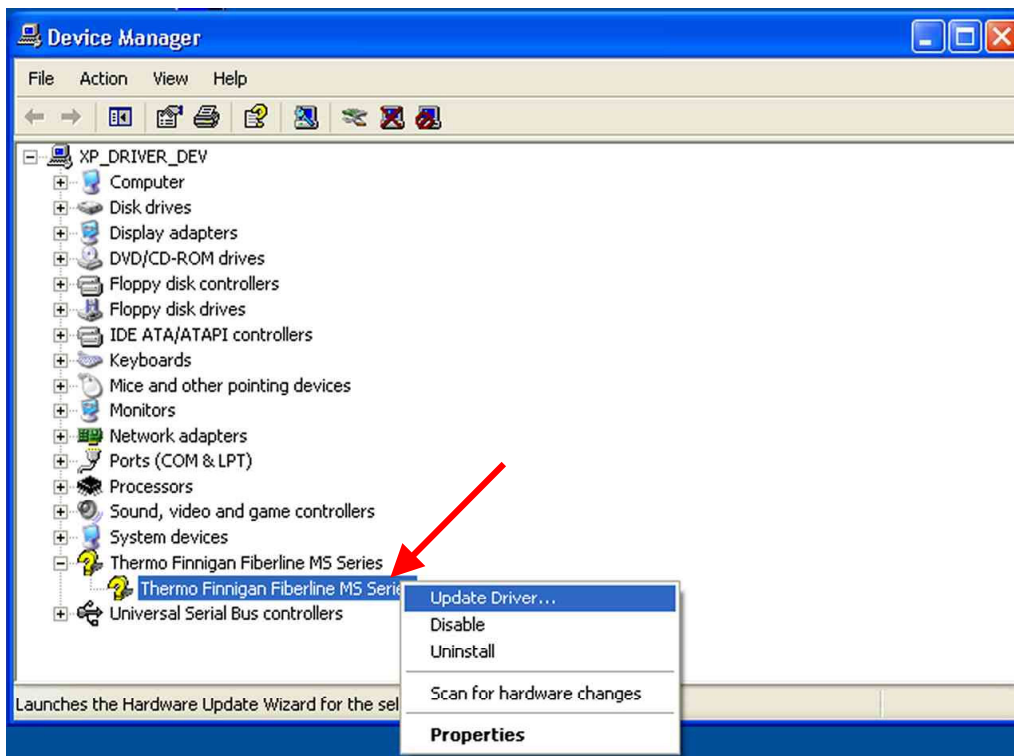
- **Mark** the Fiberline device.
- **Right-click** on it.
- Select **Update Driver...**



- The wizard appears. Proceed as is described in chapter 1.1, i.e. usual case.



The fiberline has been recognized correctly and is marked by a question mark.



➤ **Mark** the Fiberline device. **Right-click** on it. Select **Update Driver....**

Technical information contained in this publication is for reference purposes only and is subject to change without notice. Every effort has been made to supply complete and accurate information; however, Thermo Finnigan assumes no responsibility and will not be liable for any errors, omissions, damage, or loss that might result from any use of this manual or the information contained therein (even if this information is properly followed and problems still arise).

This publication is not part of the Agreement of Sale between Thermo Finnigan and the purchaser of ISODAT NT. In the event of any conflict between the provisions of this document and those contained in Thermo Finnigan's Terms and Conditions, the provisions of the Terms and Conditions shall govern.

Reference to System Configurations and Specifications supersede all previous information and are subject to revision without notice.



Worldwide represented by

Australia,	Thermo Finnigan Australia Pty.Ltd., Unit 14, 38-46 South Street, P.O. Box 239,Rydalmere, N.S.W 2116 Phone +61-2-98989000
Belgium,	Thermo Finnigan BVBA, Groenenborgerlaan 84, 2610 Antwerp-Wilrijk Phone +32-3-8250670
France,	Thermo Finnigan France SA, Hightec Sud, 12 av. des Tropiques, ZA de Courtaboeuf - BP 141, 91944 Les ULIS Cedex Phone +33-1-69188810
Germany,	Thermo Finnigan GmbH, Boschring 12, 63329 Egelsbach Phone +49-6103-408-0
Italy,	Thermo Finnigan APG Italy, Strada Rivoltana, 20090 Rodano (MI) Phone +39-02-95059-1
Japan,	ThermoQuest K.K., Nishi-Shinjuku Toyokuni Bldg., 2-5-8 Hatsudai, Shibuya-Ku, Tokyo 151-0061 Phone +81-3-3372-3001
The Netherlands,	Thermo Finnigan BV, Druivenstraat 33, 4816 KB Breda Phone +31-76-5878722
People's Republic of China,	Thermo Finnigan Beijing Rep. Office, Room 912, Ping-an Mansion, No. 23, Finance Street, Beijing 100032 Phone +86-10-66210839, -846
Spain,	Thermo Finnigan S.A., Avenida de Valdeparra 27, Edificio Alcor, planta 2, 28108 Alcobendas (Madrid) Phone +34-91-6574930
Sweden,	Thermo Finnigan AB, Pyramidbacken 3, 141 75 Kungens Kurva Phone +46-8-5564 6800
United Kingdom,	Thermo Finnigan Limited, Stafford House, Boundary Park, Boundary Way, Hemel Hempstead, Hertfordshire HP2 7GE Phone +44-1442-233555
U.S.A.,	Thermo Finnigan LLC, 355 River Oaks Parkway, San Jose, CA 95134 Phone +1-408-965-6800

In countries not contained in the above list Thermo Finnigan is represented by renowned instrument distributors. Information and specifications herein are subject to revision without prior notice. Availability of components and options subject to verification by local representatives.

MANUAL HISTORY

April 2003 Rev. 0 - Issue 04/2003

For additional information, please check our home page: <http://www.Thermo.com>

Thermo Finnigan MAT GmbH is a Thermo Electron business.
Copyright 2002[®] by Thermo Finnigan MAT GmbH. All rights reserved. Printed in Germany