

To: Dealer/OEM World-Wide, PAL Systems
Platform PAL Systems
From: Toni Eberwein
Date: June 27, 2017
Subject: Cycle Composer, Object Manager, PAL Loader with Windows 10

CTC Analytics Technical Note PAL: Cycle Composer and PAL System Software tested with Windows 10

PAL and PAL-xt Software tested under Windows 10:

Overview:

We have tested the Cycle Composer, Object Manager and PAL Loader software in combination with Windows 10. The main features of the software are working. Please see below which limitations are currently present. For a correct operation we recommend installing the software by following the procedure provided below.

Tested Configuration:

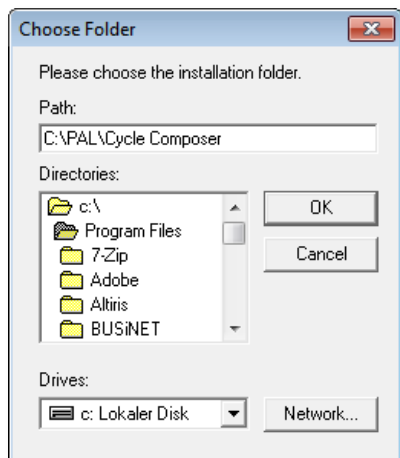
PAL Firmware version: 4.3.0
OS version: Windows 10 Enterprise 2015 LTSCB (English version)
Hardware: PAL-xt with Trayholder, StdWash and Agitator
Cycle Composer version: 1.6.0
Object Manager version: 2.2.1
PAL Loader version 2.1.1
Methods: GC-Liquid, HS-Inject, SPME-Inject

Installation Instructions:

For a smooth operation of the software we recommend following the procedure below.

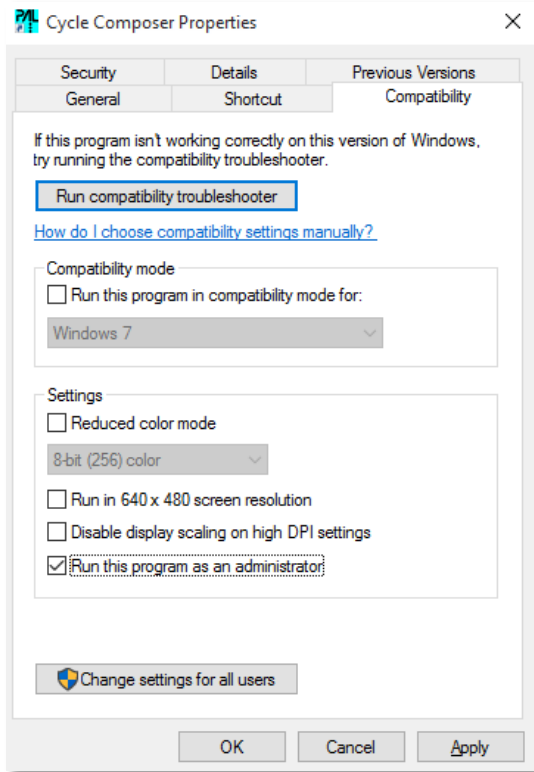
Cycle Composer:

- Start Installation as **Administrator**
- Install the software in the directory: **C:\PAL\Cycle Composer** (Picture 1).
It is not recommended to install the software in the default directory **C:\Program Files**. This directory was used for earlier Windows OS systems.



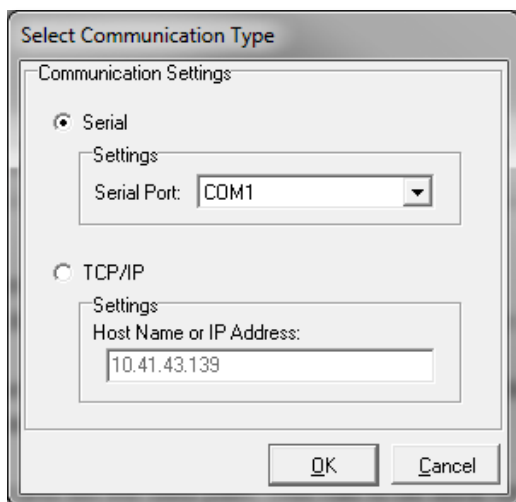
Picture 1

After installation, right-click on the CC-icon and go to tab "Compatibility". Select "Run this program as an administrator" and click on OK (Picture 2)



Picture 2

- Turn on the PAL and make sure he is connected to the PC
- Start the program once. Wait till the CC downloaded the configuration of the PAL. The system is now ready for the users.
- If the configuration was not correctly downloaded check if the Communication Settings (Serial Port or LAN) in the software on the PALsystem are matching (Picture3).



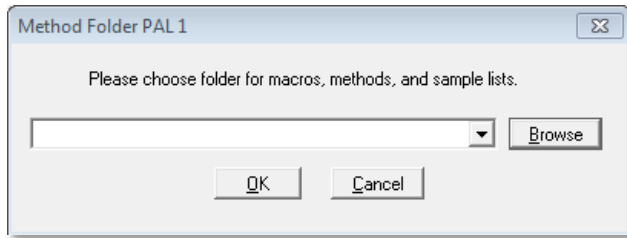
Picture 3

PAL-xt system

From the Terminal follow the path:

Menu/F3 → Setup//Communication

- For every user, log on, start the program and set the data path. This has to be done for every individual login once (Picture 4).



Picture 4

Object Manager:

- Follow the same instruction as for Cycle Composer Software but take the steps below in account.
- Install the software in the directory: **C:\PAL\Object Manager**
- Copy the Object List into the directory:
C:\PAL\Object Manager/PAL or **PAL-xt Object List Rev. X**
- See Table 1 compatibility list for Object manager and PAL firmware versions.
Warning: Loading an incompatible firmware can lead to improper operation of the PALsystem.

PALsystem	PAL Firmware	Object List Version
PAL legacy	2.X.X	PAL Object List Version L
PAL legacy	3.0.X	PAL Object List Version L
PAL- xt	4.1.X *	PAL- xt Object List Rev. B
PAL- xt	4.1.3 (or higher)	PAL- xt Object List Rev. E (or higher)

Table 1

* Firmware 4.1.2 should not be used anymore if a newer firmware is compatible with the control software.

PAL Loader:

- Follow the same instruction as for Cycle Composer Software but take the steps below in account.
- Install the software in the directory: **C:\PAL\PAL Loader**
- **Do not use LAN communication** (see details under “Known Limitations”).

Known Limitations and comments:

Cycle Composer:

- There are no known limitations.

Object Manager:

- If the software is started without a valid COM-Port, the error "ie_Badid - specified comport doesn't exist" is showing up and the software is closed automatically. If you start Object manager software a second time, you can define the COM-Port and the software is working correctly.

PAL Loader:

- Creating a backup file through LAN connection isn't possible. The following error is shown: **"Reading target memory failed: unexpected response format (-4005)"**
- Info and Start PAL is working through LAN connection. But it is recommended to **not use the LAN communication** in combination with Windows 10.

Best Regards,

CTC Analytics AG